

# VPECKER USER MANUAL

## Table of contents

1. Software operating environment.....	2
2. Software downloading and installation.....	2
2.1 Software downloading.....	2
2.2 Software installation.....	2
3. Software activation and downloads.....	4
3.1 Software activation.....	4
3.2 Software downloads.....	7
3.3 Software management.....	9
4. Software description.....	10
4.1 Online store.....	10
4.2 Diagnosis service system.....	11
4.2.1 Features.....	11
4.2.2 Vehicle coverage.....	13
4.2.3 System coverage.....	14
4.2.4 Function coverage.....	14
4.3 Expert service system.....	14
4.4 Settings.....	15
4.4.1 Language.....	15
4.4.2 Run mode.....	15
4.4.3 Unit selection.....	16
4.4.4 Display mode.....	16
4.4.5 Logging.....	17
4.4.5 Update.....	17
4.4.6 About me.....	17
4.5 DTC query.....	18
4.6 Dictionary.....	19
4.7 Example.....	19
4.7.1 Communication.....	19
4.7.2 Read ECU information.....	22
4.7.3 Read DTCs.....	22
4.7.4 Earse DTCs.....	22
4.7.5 Data List.....	23
4.7.6 Inspection.....	25
4.7.7 TP Position Reset.....	27
4.8 Screenshot.....	29
4.9 Print.....	29
5. Products website.....	31
6. Warranty.....	31

## 1. Software operating environment

- Hardware requirements: laptop, PC and PAD with Wi-Fi or Bluetooth. Space of system disk can't less than 5G, and RAM can't less than 1G.
- Operating Systems: Supporting from WINDOWS XP to WINDOWS 10 except for WINDOWS RT.
- Network requirements: The software needs to be activated & downloaded online, so please make sure your internet is connected.

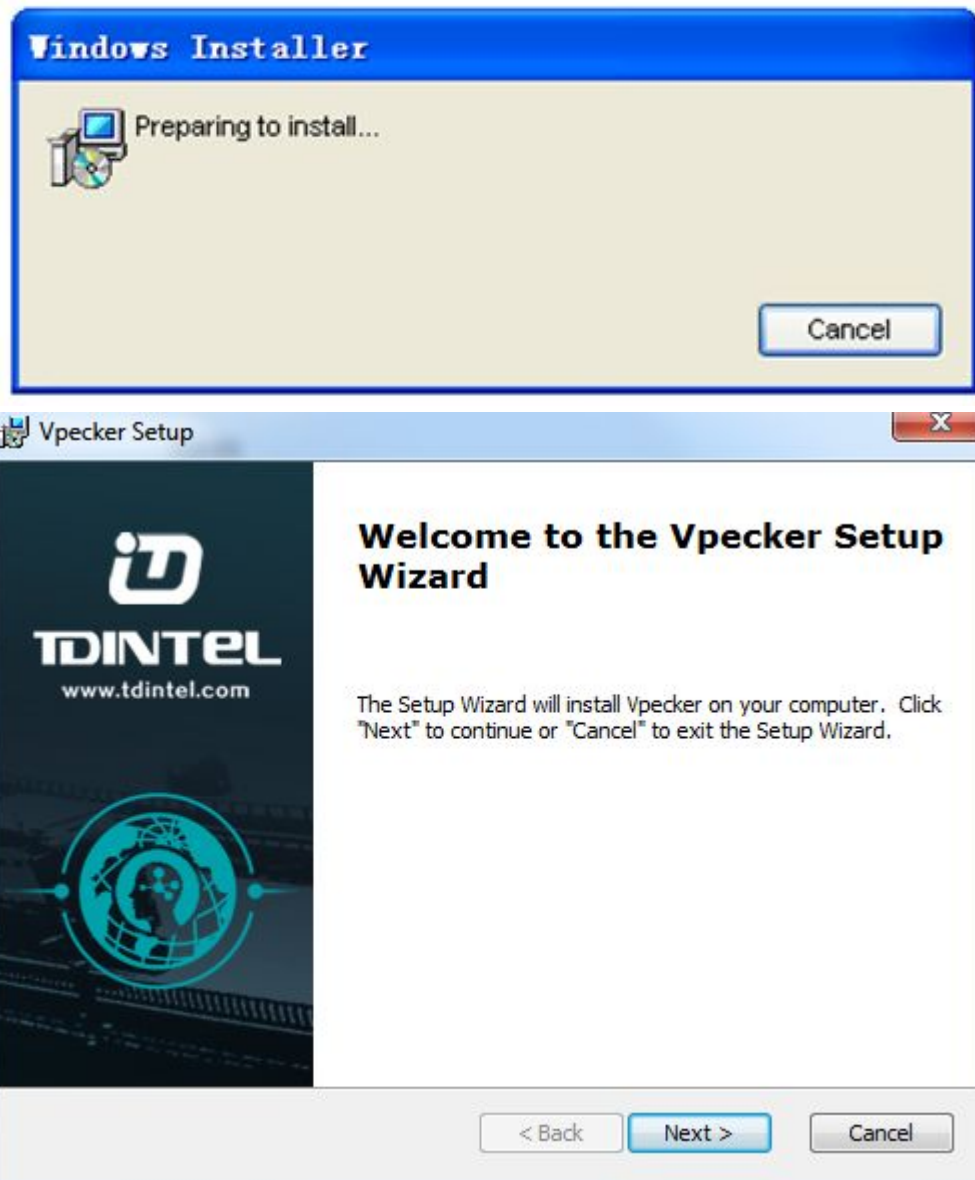
## 2. Software downloading and installation

### 2.1 Software downloading

Opening the website: [http://www.tdintel.com/mod\\_download-fullist.html](http://www.tdintel.com/mod_download-fullist.html) , and download “Vpecker setup V4.11.zip”

### 2.2 Software installation

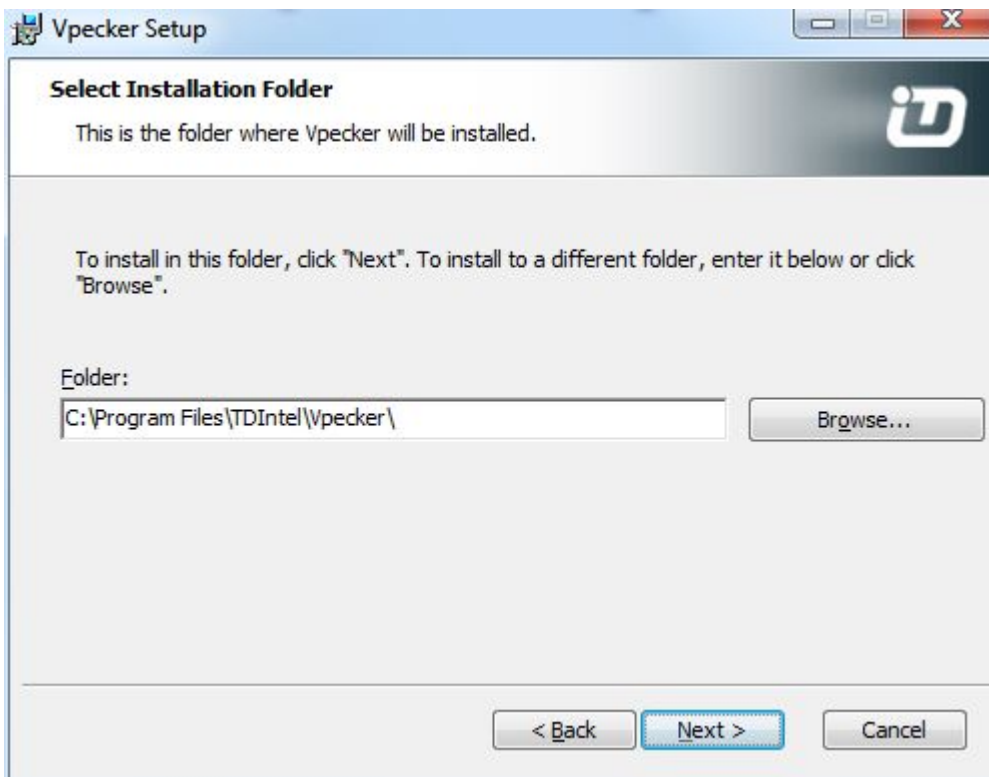
Unzip Vpecker setup V4.11.zip and run Vpecker setup.exe:



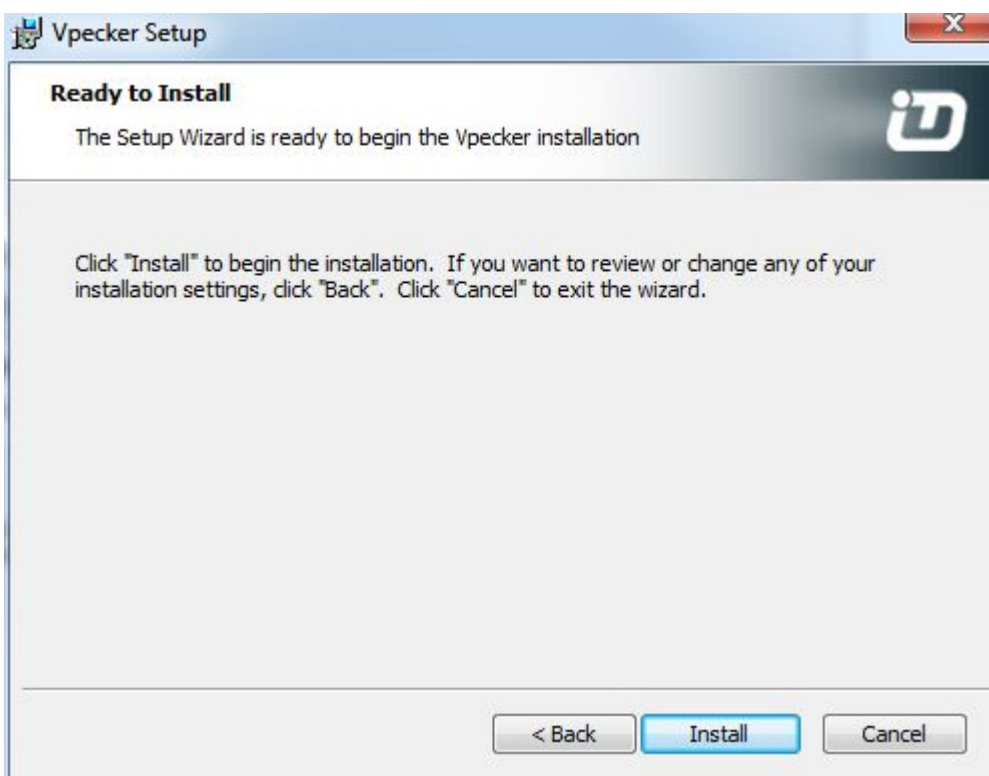
Please click “Next”.



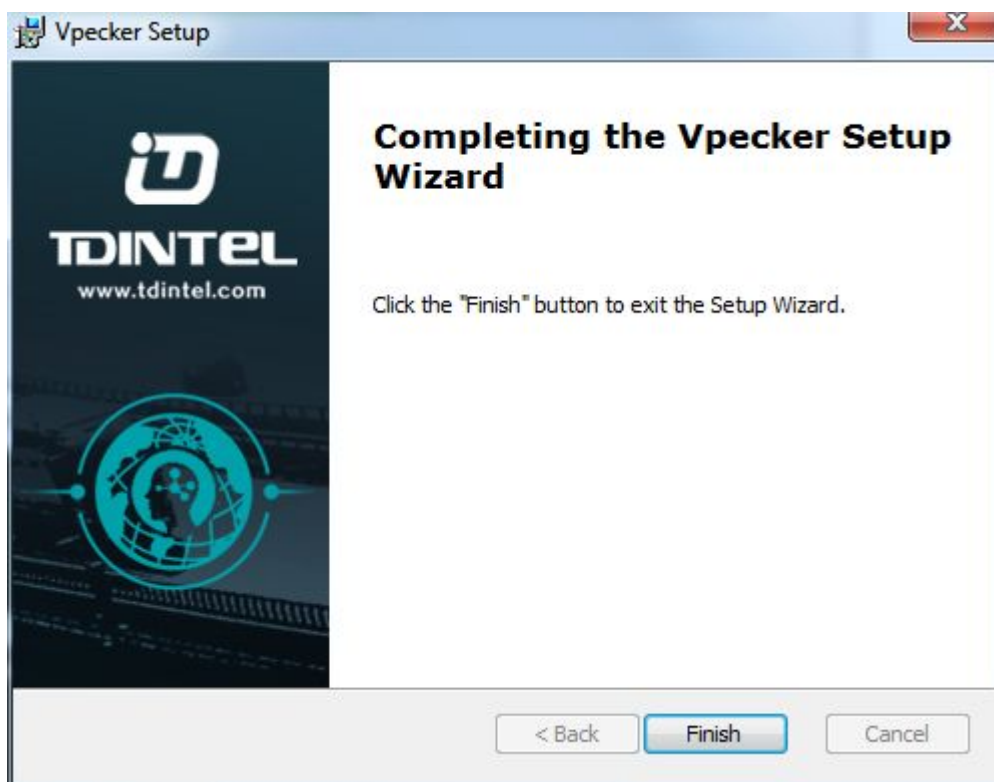
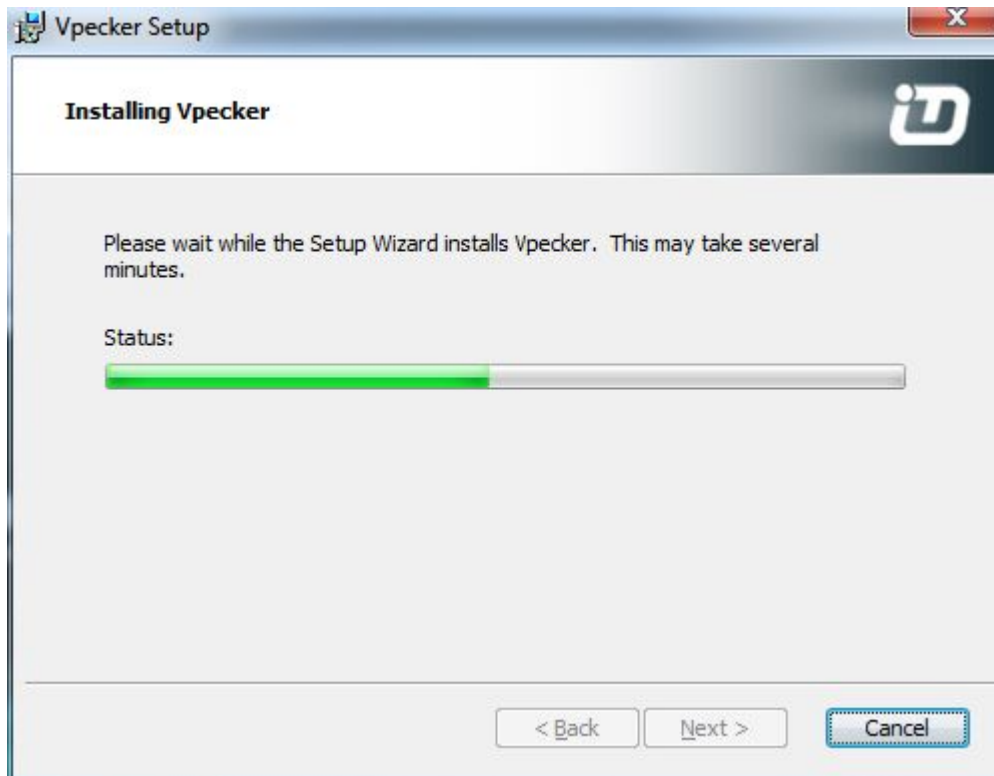
Please click "Next".



You can change the path to install the software, then, please click "Next".



Please click "Install".



VPECKER wireless diagnostic service system installs successfully.

### 3. Software activation and downloads

#### 3.1 Software activation

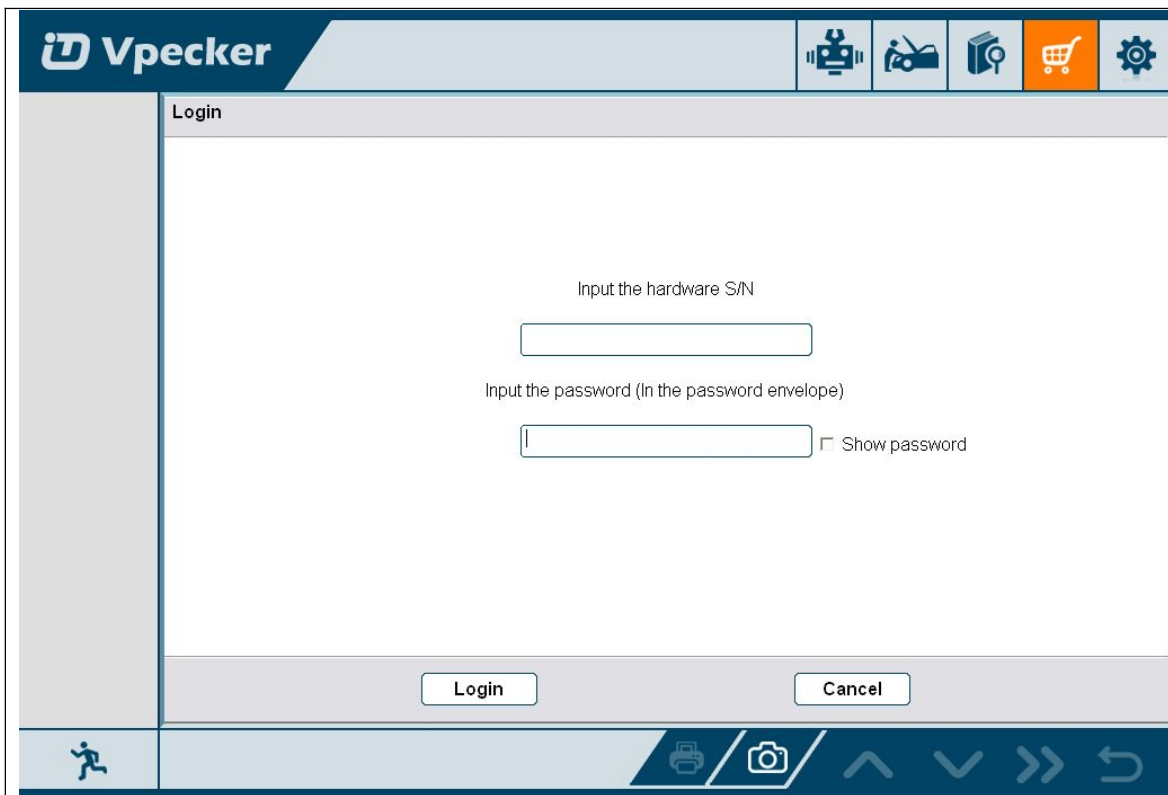
At first, please keep network working. Run VPECKER APP, then click "Online store" to get applications.



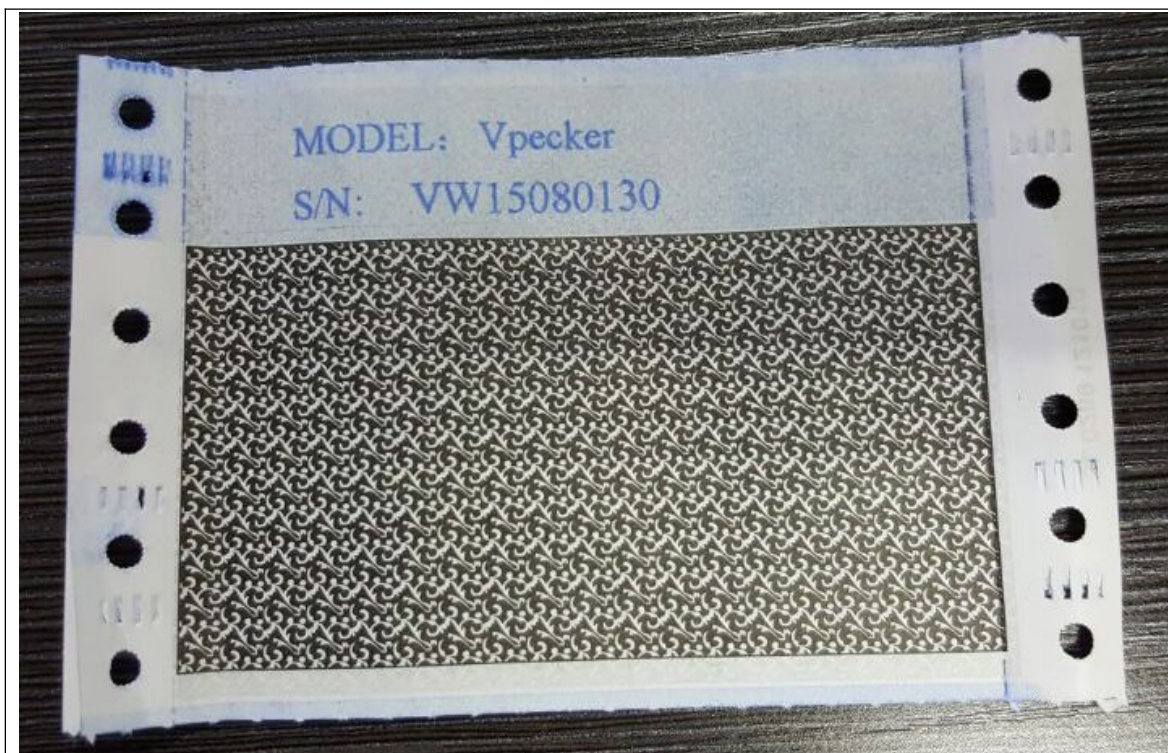
Please wait...

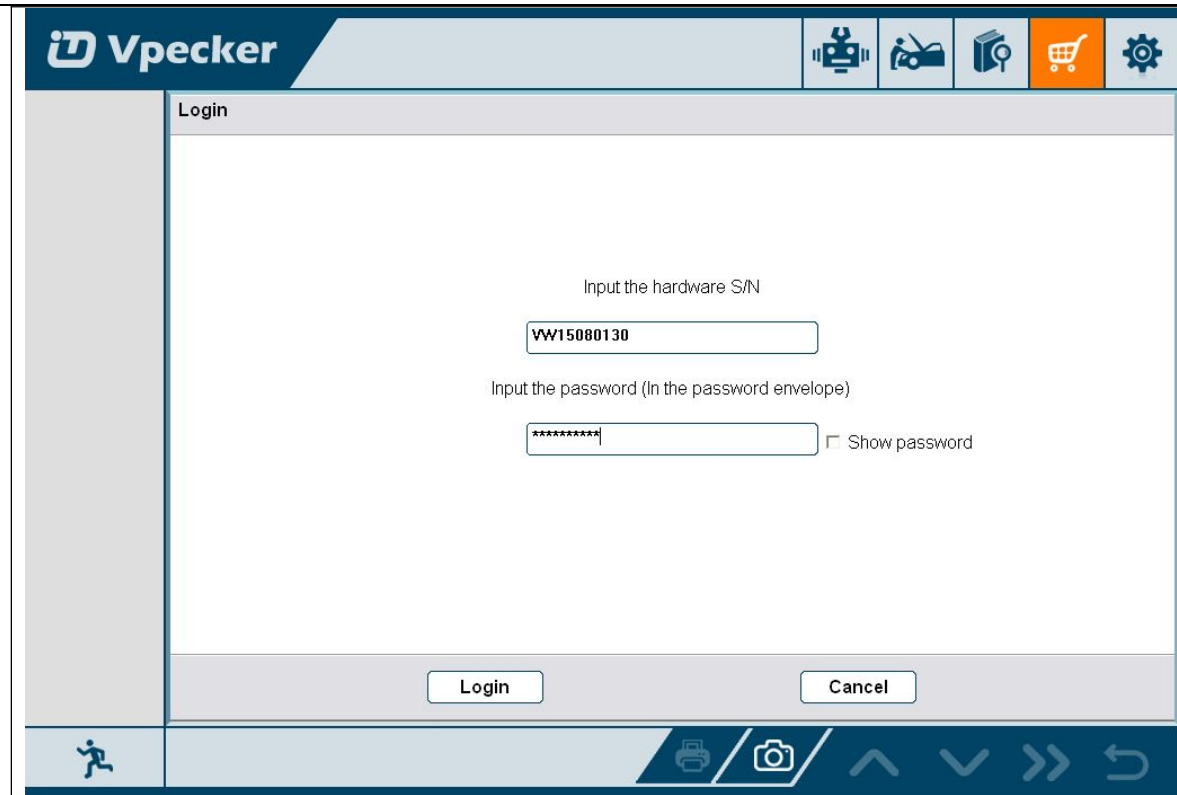


Please click "Online store".

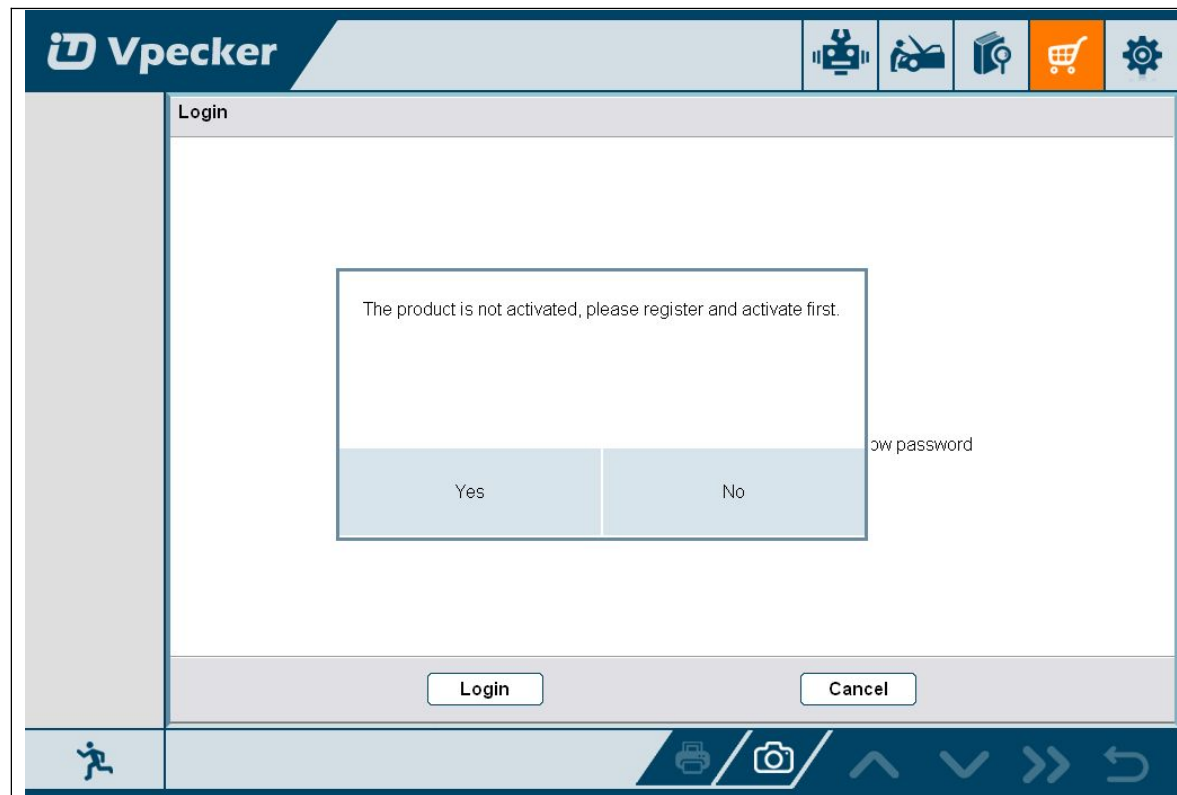


Please enter the S/N number and password get from the envelope, and then click "Login".

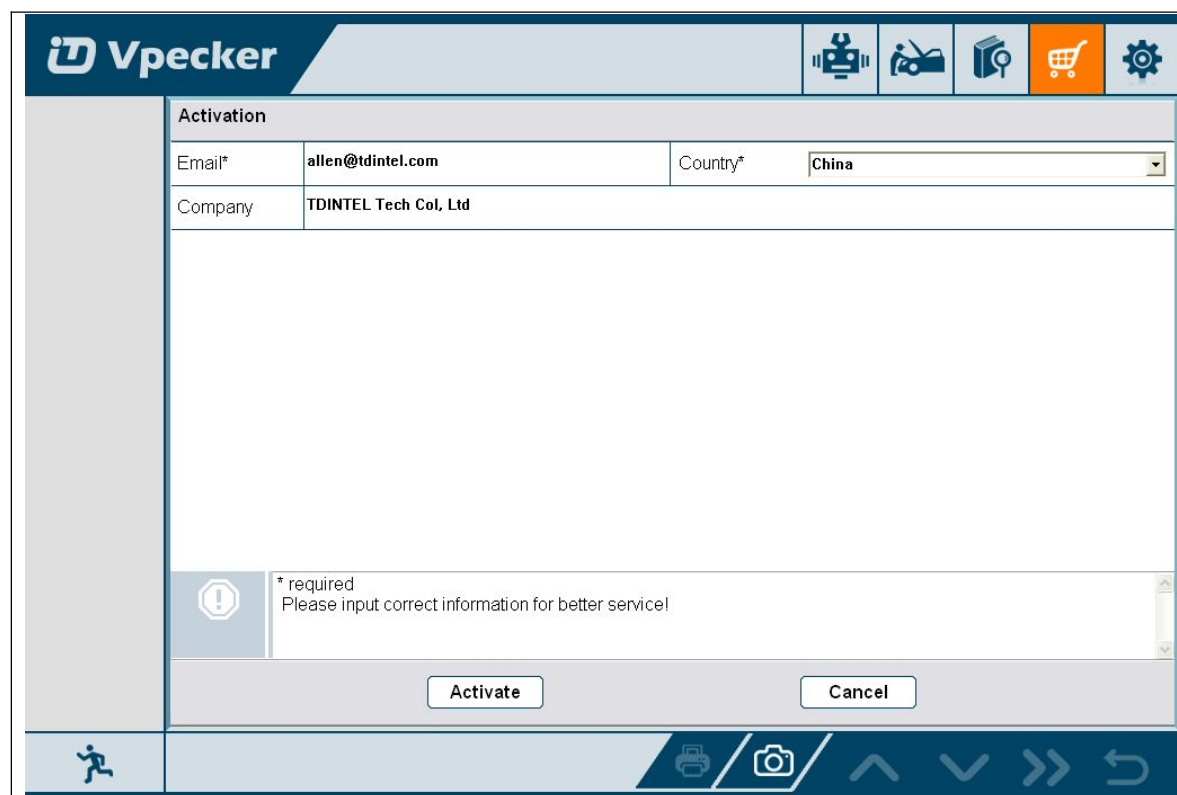




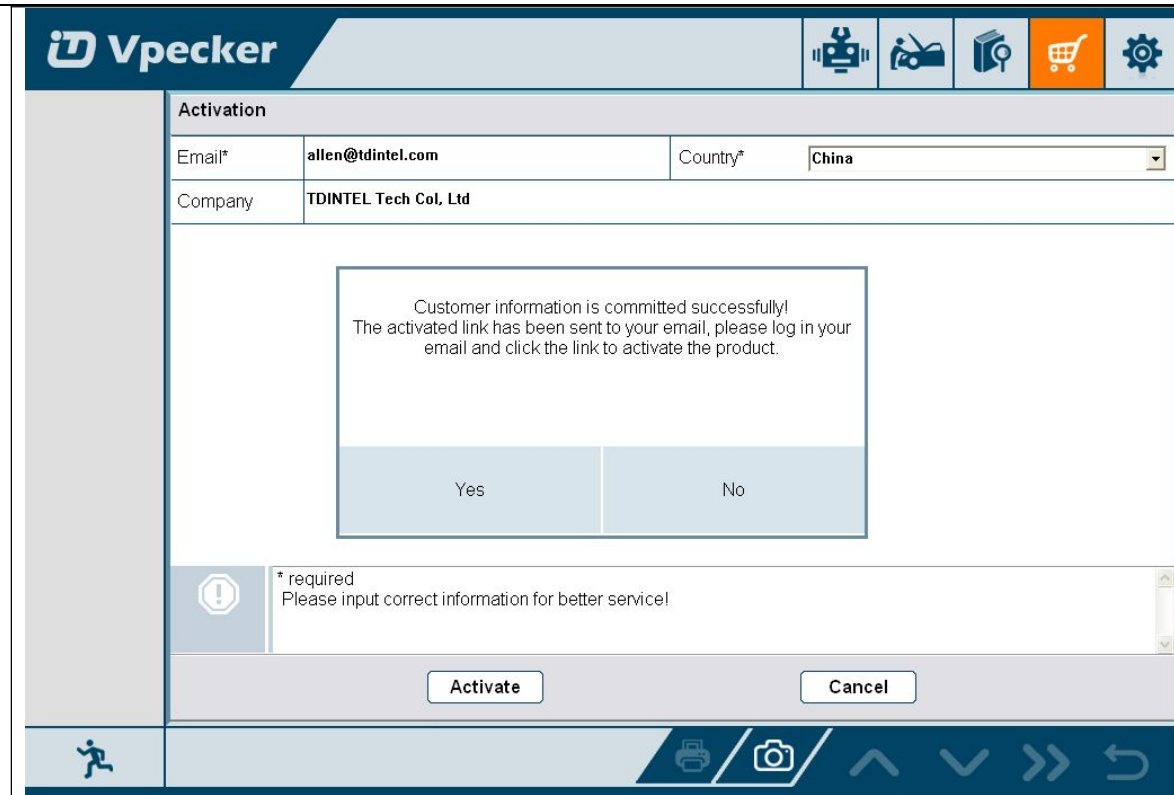
Please click "Login".



If the product is not activated, please click "Yes".



Please input your information, the Email address and country are required, and then click "Activate".



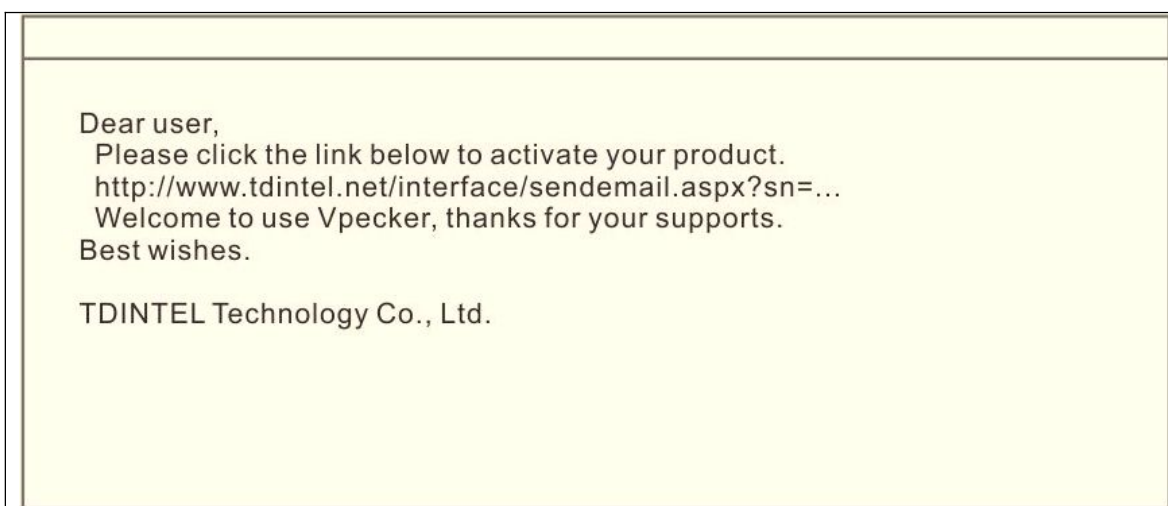
Note:

Your email address must be real in order to get the activated link and the further better service from the manufacturer. The software update reminder and the new product release information will be sent to your email.

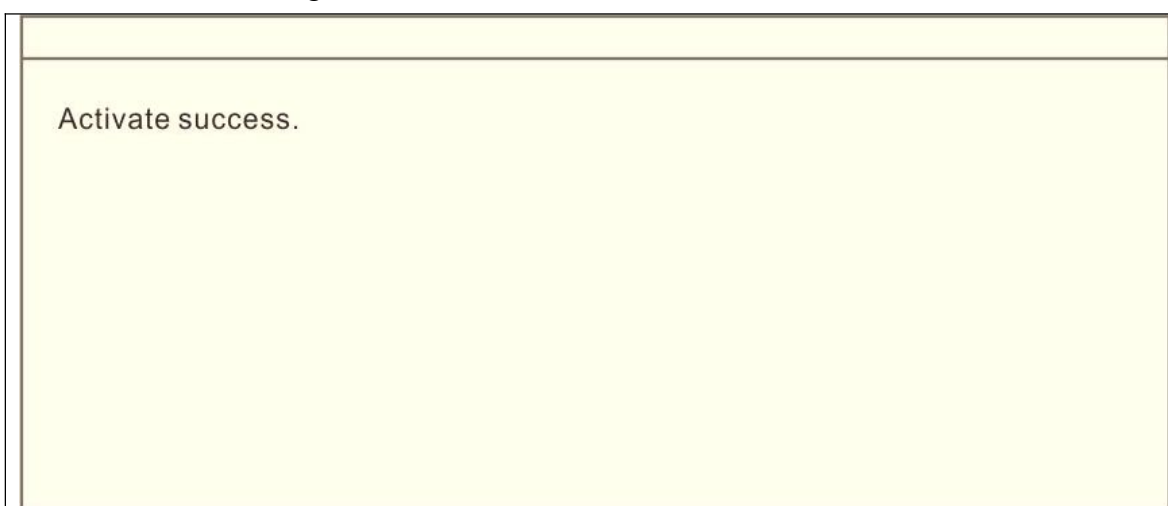
Company name: company name must be filled in and the length is within 250 characters.

Country: please choice your country in the list.

Press “Yes” to confirm your information:

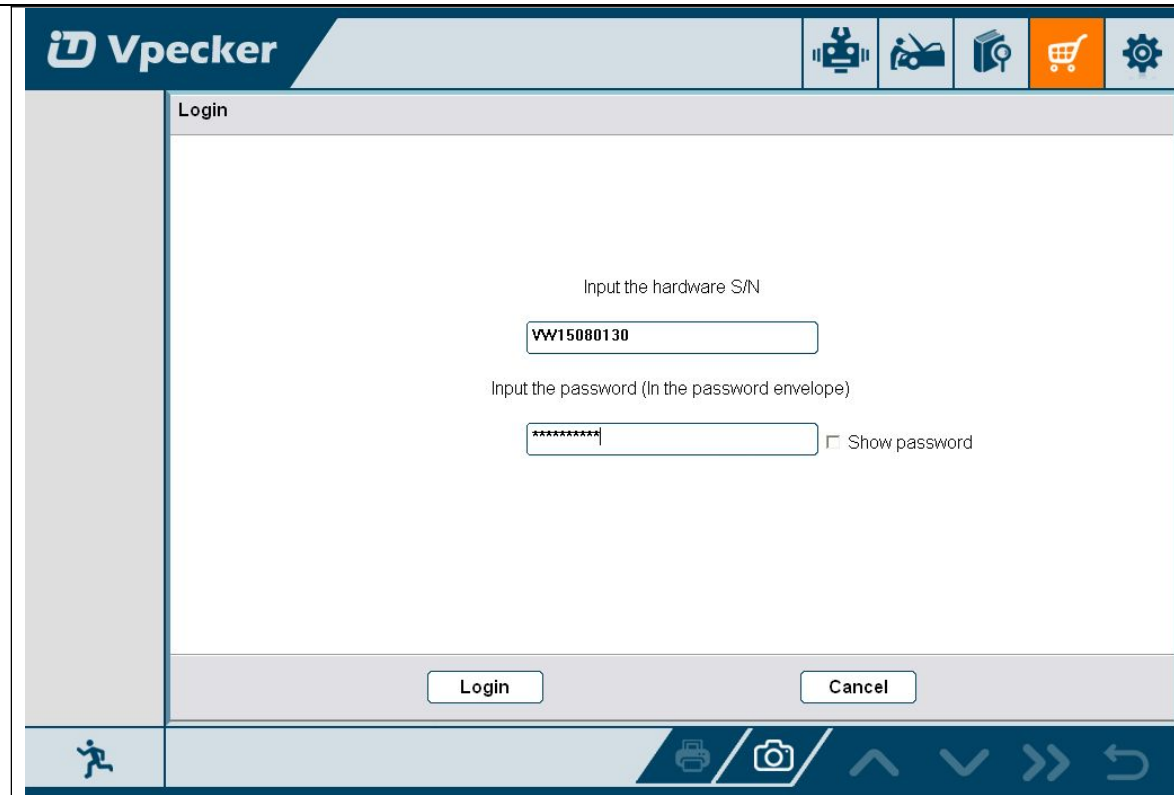


Please click the link to get the confirmation from the manufacturer.

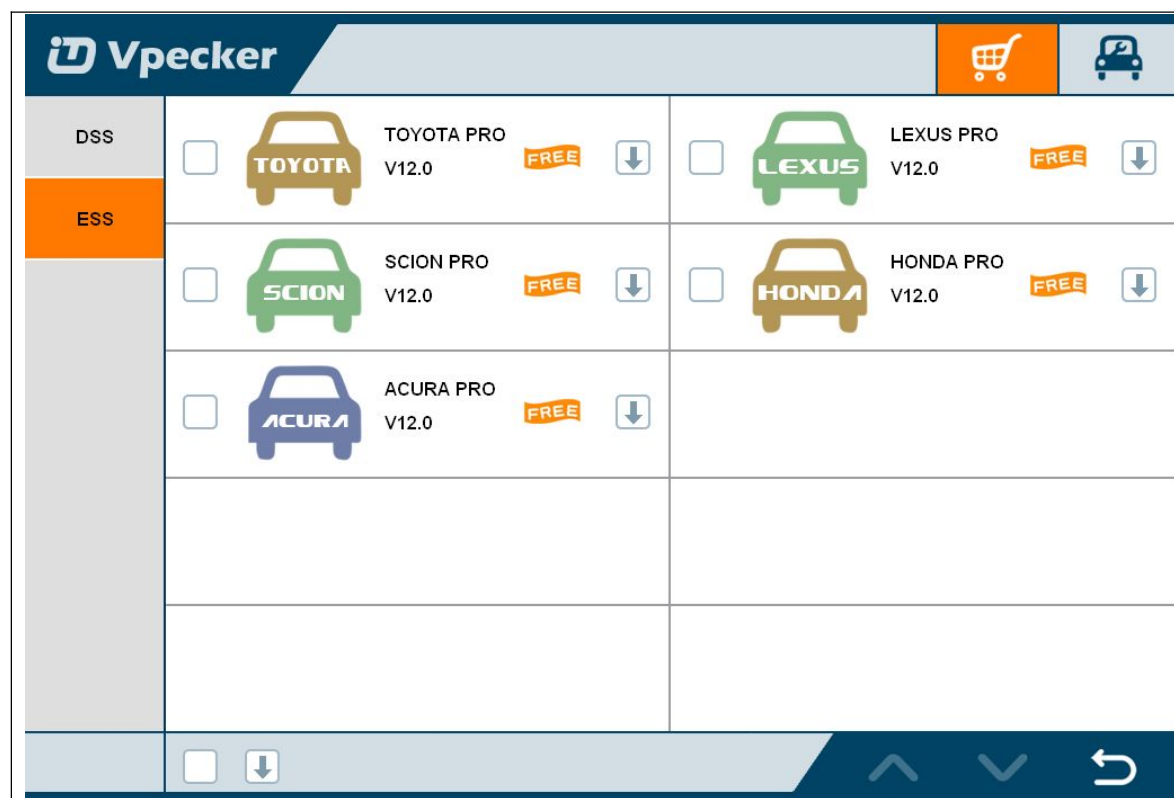
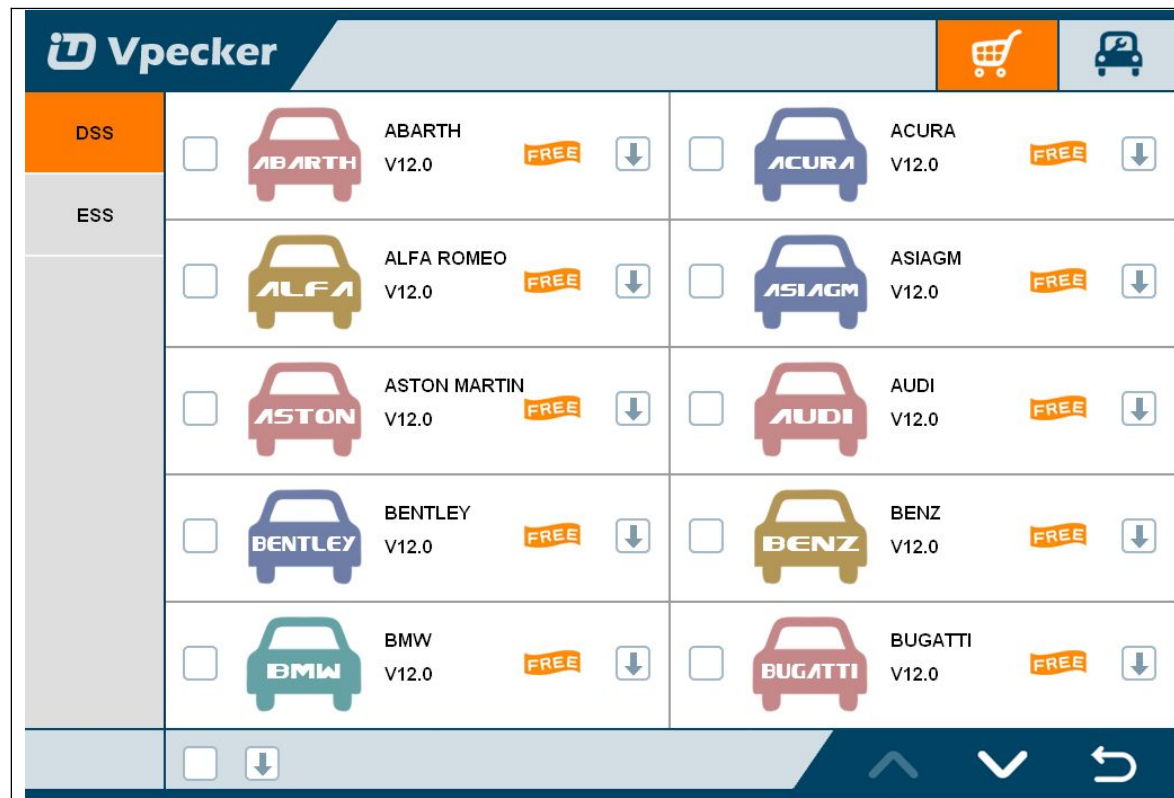


### 3.2 Software downloads

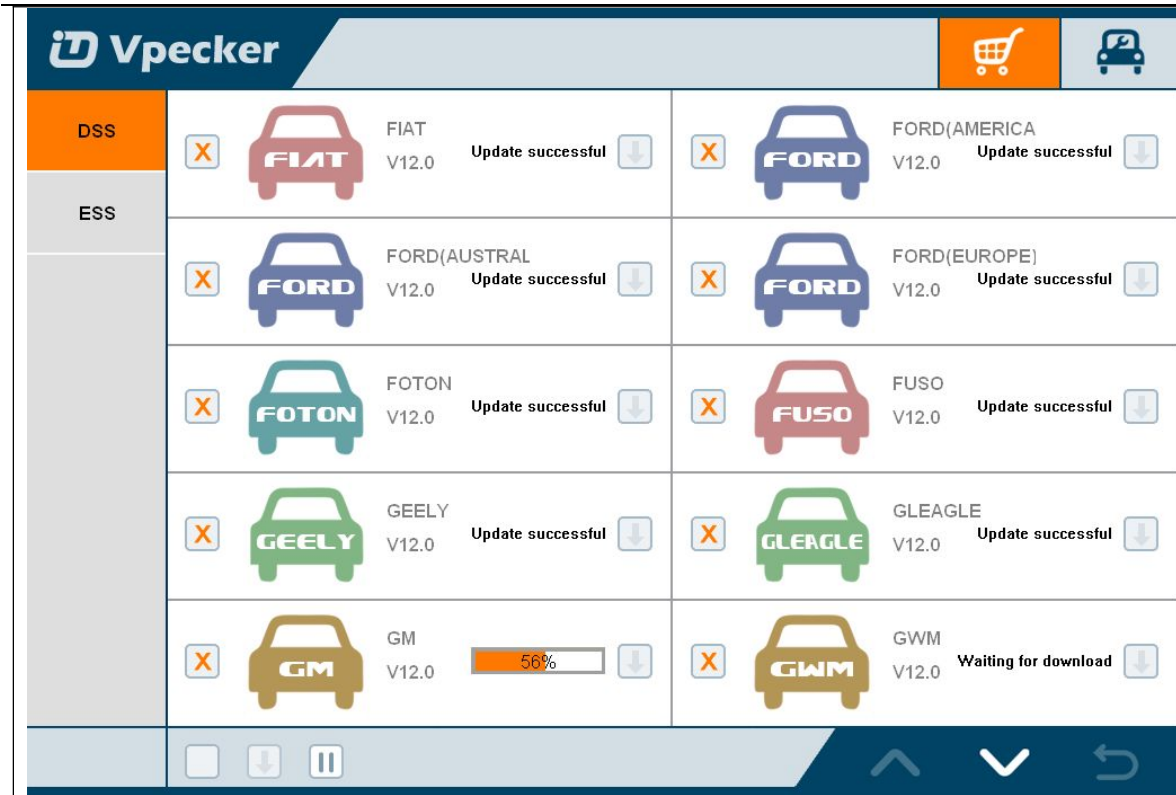
After the activation, please login the online store again, and get the APPs upgrade.



Please, click “Login” to download the software.



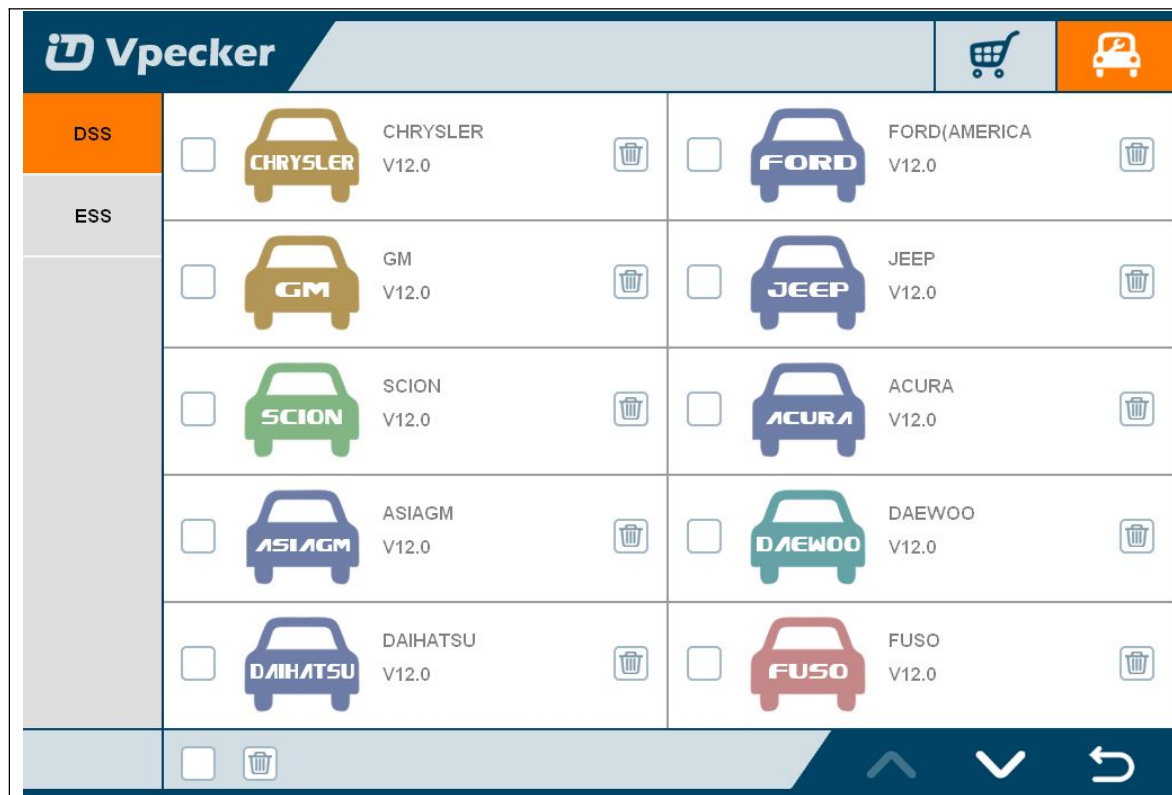


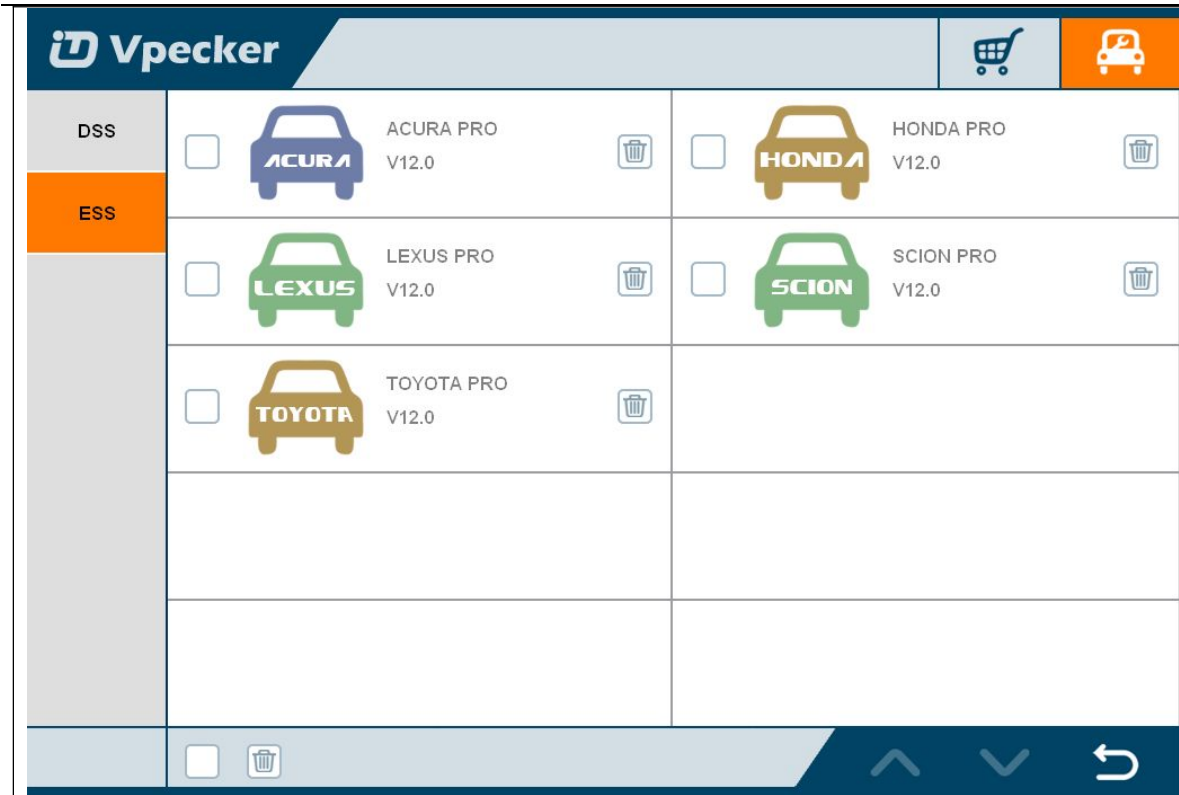


There are two modes for downloading, one by one and one-click. It may take a long time to download all the software, due to customers' network speed reason.

### 3.3 Software management

Users can delete vehicle software here. You can delete one by one or all-selected delete.





## 4. Software description

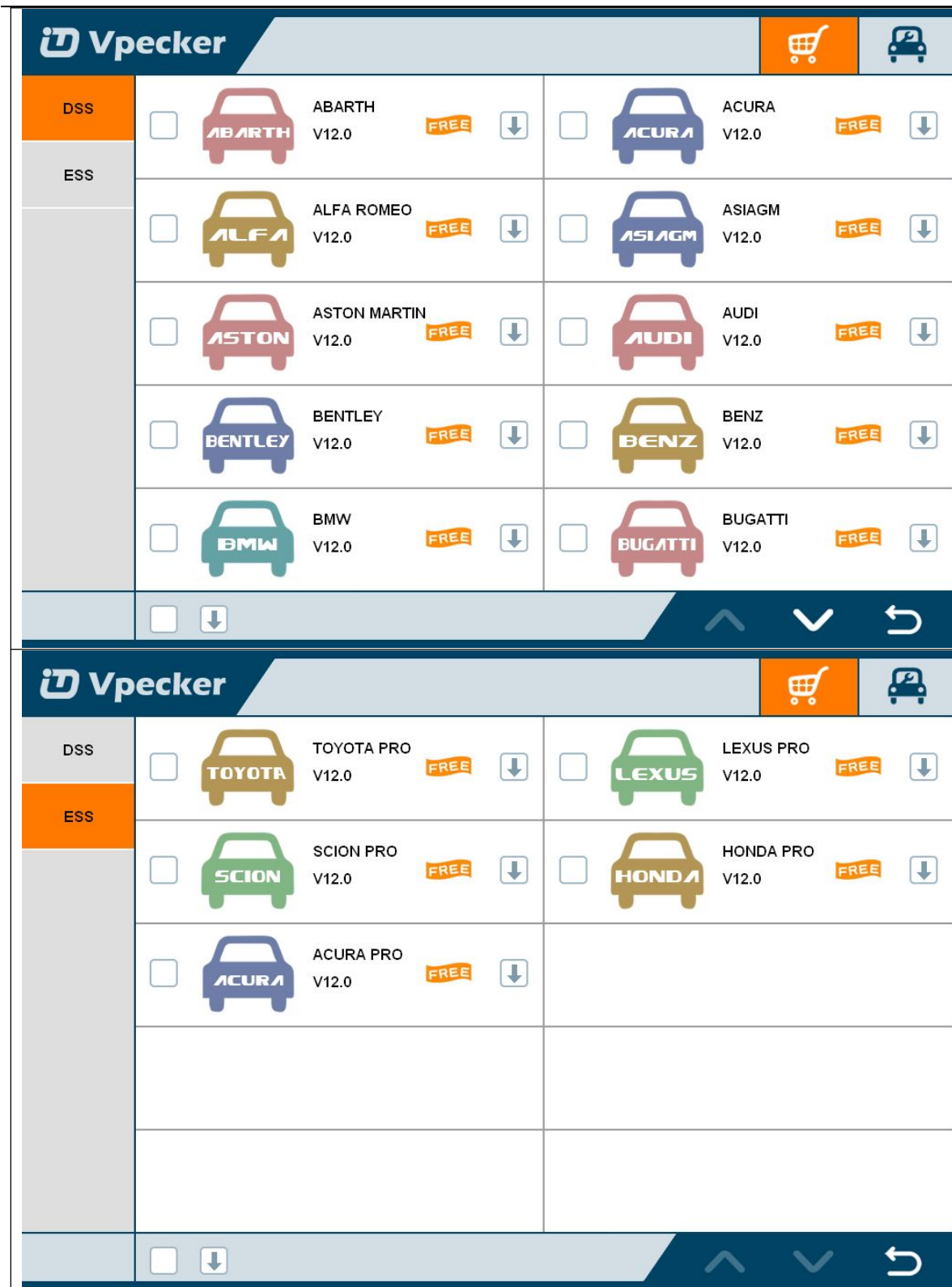
Run VPECKER, The screen will show:



### 4.1 Online store

#### Features

- Automatic Wi-Fi updates available in new software releases by smart upgrade mode.
- Wi-Fi internet capability allows for wireless access throughout the workshop.
- Extremely easy-to-use with touch-screen operation and intuitive operation in the windows.



## 4.2 Diagnosis service system

### 4.2.1 Features

- Extensive vehicle coverage for more than 75 US domestic, European, Asian, Australian and Chinese vehicles makes.
- Complete function capability including live data, ECU programming and so many others.
- Unparalleled OBDII functionalities-support ALL 5 OBDII protocols and ALL 10 test modes.
- Can check out the year and model of the vehicles automatically and quickly.
- The genuine Windows 8 and Windows 10 operating systems allows for more stable performances, better compatibility and expandability

**Vpecker**

AMERICA					
ASIA	CHRYSLER	FORD(AMERICA)	GM	JEEP	SCION
AUSTRALIA					
CHINA					
EUROPE					
OBDII					
	<div style="display: flex; justify-content: space-between; align-items: center; padding: 5px;"> </div>				

**Vpecker**

AMERICA					
ASIA	ACURA	ASIAGM	DAEWOO	DAIHATSU	FUSO
AUSTRALIA					
CHINA					
EUROPE	HONDA	HYUNDAI	INFINITI	ISUZU	KIA
OBDII					
	LEXUS	MAZDA	MITSUBISHI	NISSAN	PERODUA
	<div style="display: flex; justify-content: space-between; align-items: center; padding: 5px;"> </div>				

**Vpecker**

AMERICA					
ASIA	FORD(AUSTRALIA)	HOLDEN			
AUSTRALIA					
CHINA					
EUROPE					
OBDII					
	<div style="display: flex; justify-content: space-between; align-items: center; padding: 5px;"> </div>				



4.2.2 Vehicle coverage

US domestic: CHRYSLER, FORD, GM, JEEP, SCION, etc.

European: ABARTH, ALFA, ASTON, AUDI, BENTLEY, BENZ, BMW, BUGATTI, CITROEN, DACIA, FERRARI, FIAT, FORDEU, JAGUAR, LAMBORGHINI, LANCIA, LANDROVER, MASERTI, MINI, OPEL, PEUGEOT, PORSCHE, RENAULT, SAAB, SEAT, SKODA, SMART, VAUXHALL, VOLVO, VW, etc.

Asian: ACURA, ASIAGM, DAEWOO, DAIHATSU, HONDA, HYUNDAI, INFINITI, ISUZU, KIA, LEXUS, MAZDA, MITSUBISHI, NISSAN, PERODUA, PROTON, SSANGYONG, SUBARU, SUZUKI, TOYOTA, etc.

Australian: HOLDEN and FORD(AUSTRALIA).

China: BYD, CHANGAN, CHANGHE, CHERY, EMGRAND, ENGLON, FOTON, GEELY, GLEAGLE, GWM, HBSH, HUACHEN, LIFAN, WULING, YUAN, etc.

OBDSII vehicle: CHRYSLER, FORD, GM, TOYOTA, LEXUS, HONDA, HYUNDAI, KIA, MAZDA, MITSUBISHI, NISSAN, SUBARU, SUZUKI, ABARTH, ASTON MARTIN, BUGATTI, FERRARI, LAMBORGHINI, MASERTI, BENZ, BMW, VW, AUDI, SEAT, SKODA, PORSCHE, JAGUAR, LANDROVER, VOLVO, SAAB, ALFA, etc.

#### **4.2.3 System coverage**

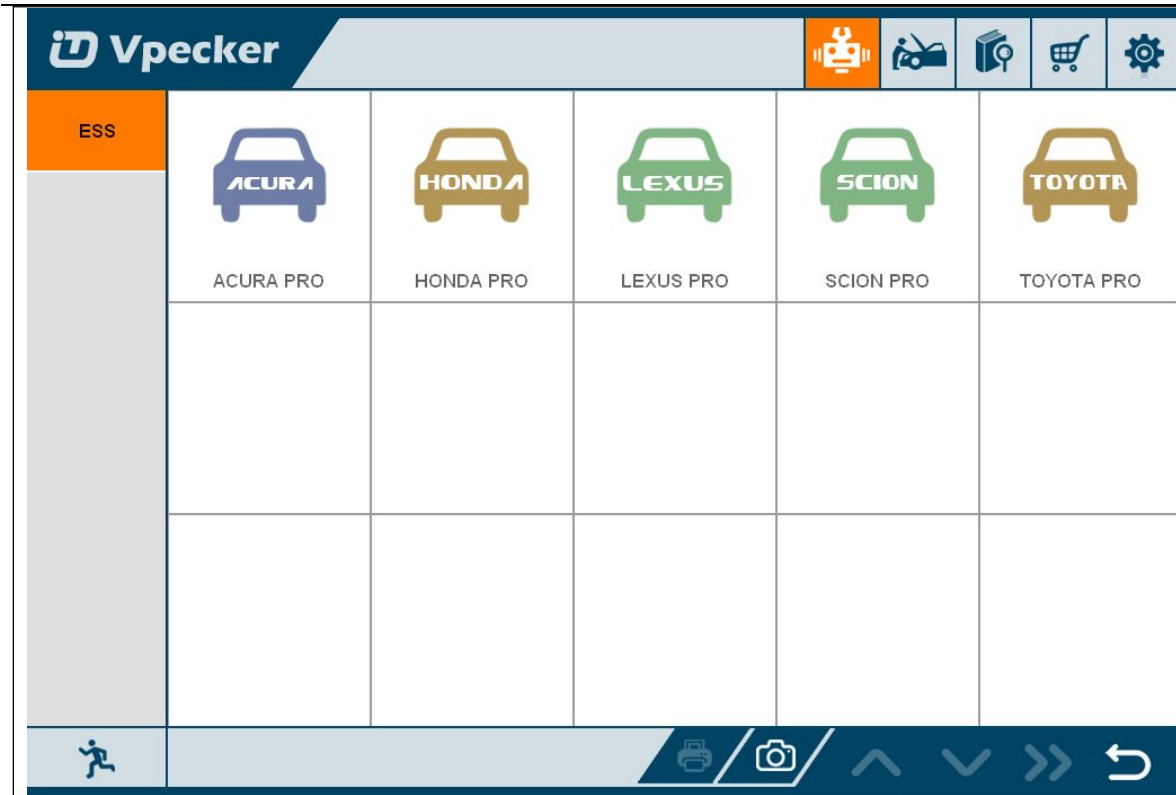
ME-Motor electronics, CDI-Common Rail Diesel Injection, ETC-Electronic transmission control, ESM-Electronic selector module, SBC- Sensotronic Brake Control, ESP-Electronic stability program, BAS-Brake assist, Suspension, TPC-Tire pressure monitor, Airbag, CGW-Central gateway, EIS-Electronic ignition switch, OCP-Overhead control panel, UCP-Upper control panel, XALWA-Xenon headlamp, HRA-Headlamp range control, ATA-Anti-theft alarm system, IC-Instrument cluster, ASSYST-Active Service System, SCM-Steering column module, EPS-Electrical power steering, PTS- Parktronic system, EPB-Electric parking brake, COMAND/AUDIO, CD/DVD, TV tuner, CTEL-Cellular telephone, DCM-Door control module, ESA driver-Electric seat adjustment driver, ESA passenger-Electric seat adjustment passenger, AAC-Air conditioning, WSS-Weight sensor system, SVMCM-Special vehicle multifunction control module, etc.

#### **4.2.4 Function coverage**

Quick Test, Read ECU Info., Read DTCs, Erase DTCs, Clear learning value, Data Stream, Actuators, Read freeze frame data, Read/Write VIN, Basic Reset, Control unit adaptations, Throttle adaptations, Air bleeding, Level calibration, Theft alarm Reset, Key programming, Oil change, Idle speed learning, Idle speed Adjustment, Ignition timing adjustment, Camshaft timing control learning, Maintenance functions, ECU Initial startup, ECU initialization, etc.

### **4.3 Expert service system**

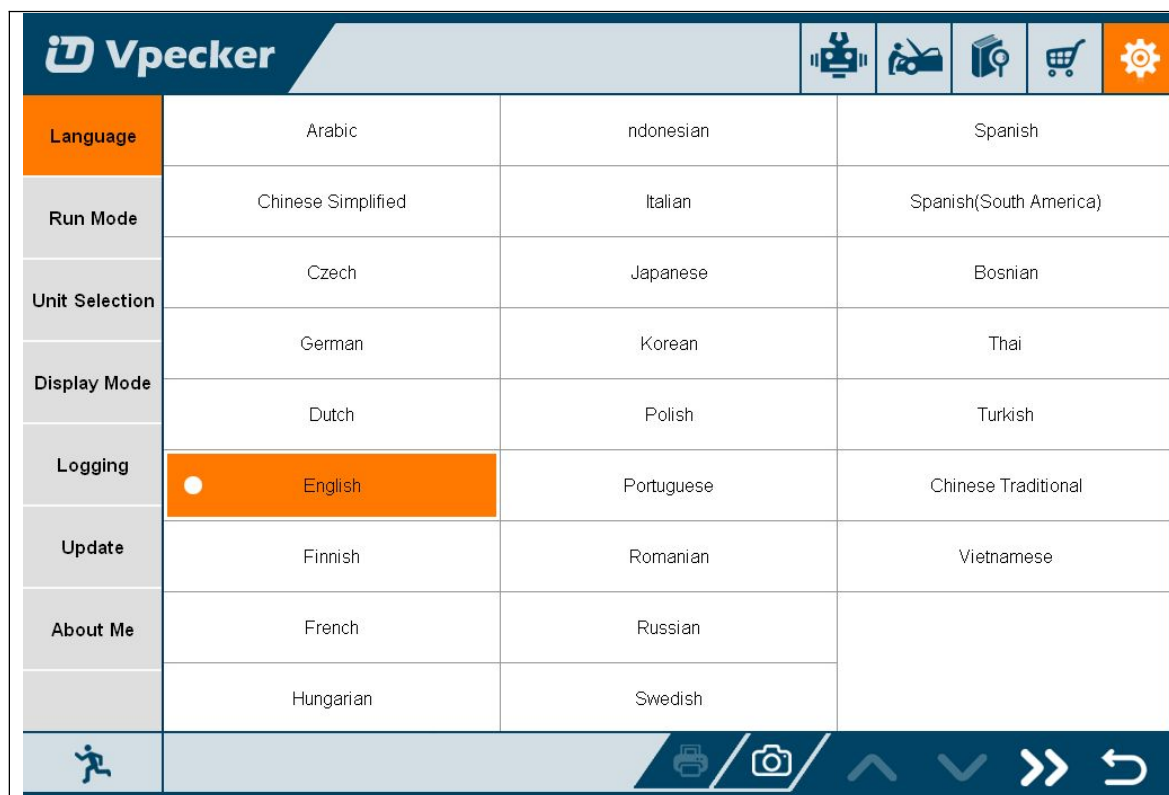
Expert service system, according to customers' requirement list, focus on special functions such as Oil change, Idle speed learning, Idle speed Adjustment, Air bleeding, Level calibration, Throttle adaptations, Steering Angle Sensor Calibration, EPB Reset, DPF Reset, ECU Initial startup, ECU initialization, etc.



## 4.4 Settings

### 4.4.1 Language

Choose the language you need, as the picture shows:

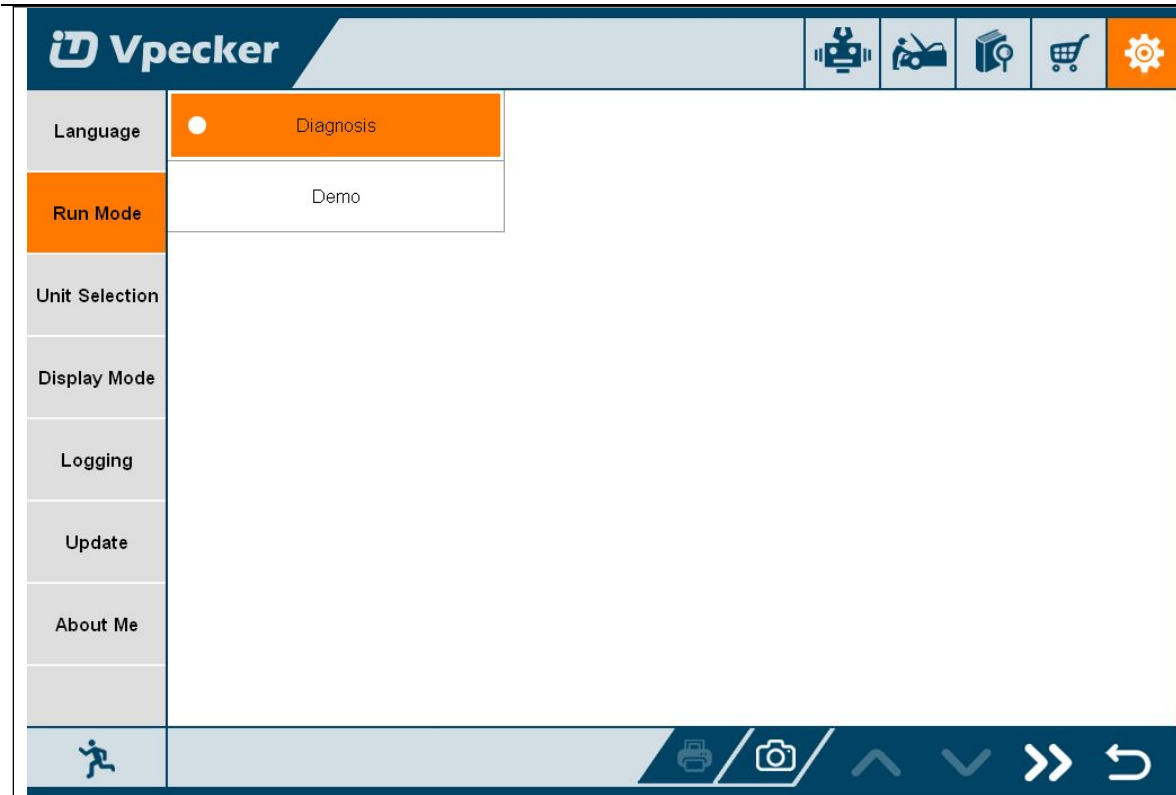


Language coverage: Supporting more 25 languages, including Chinese (Simplified), English, Chinese (Traditional), Japanese, German, Russian, French, Italian, Spanish, Portuguese, Polish, Turkish, Dutch, Hungarian, Korean, Czech, Arabic, Indonesian, Persian, Thai, Vietnamese, Finnish, Swedish, Romanian, Bosnian, etc.

Note: It will take English by default.

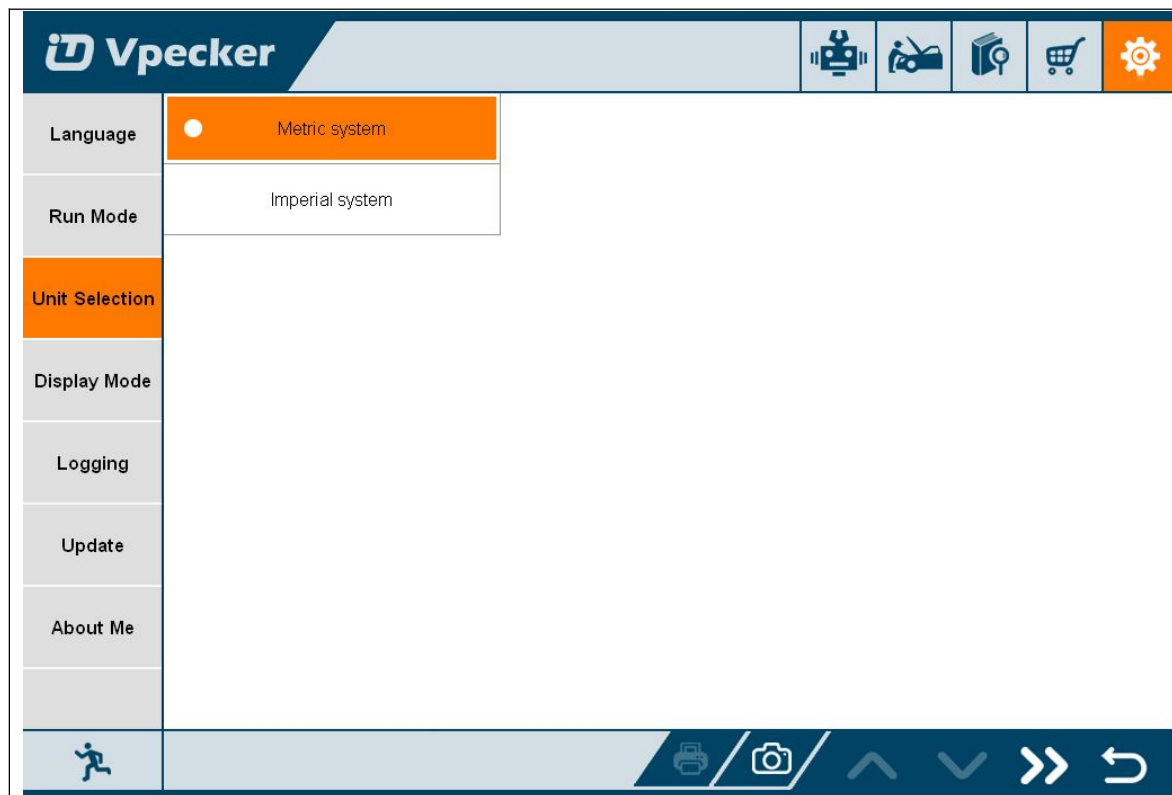
### 4.4.2 Run mode

It has Demo, so even VPECKER is not connected, it can simulate how VPECKER works. As the picture shows:



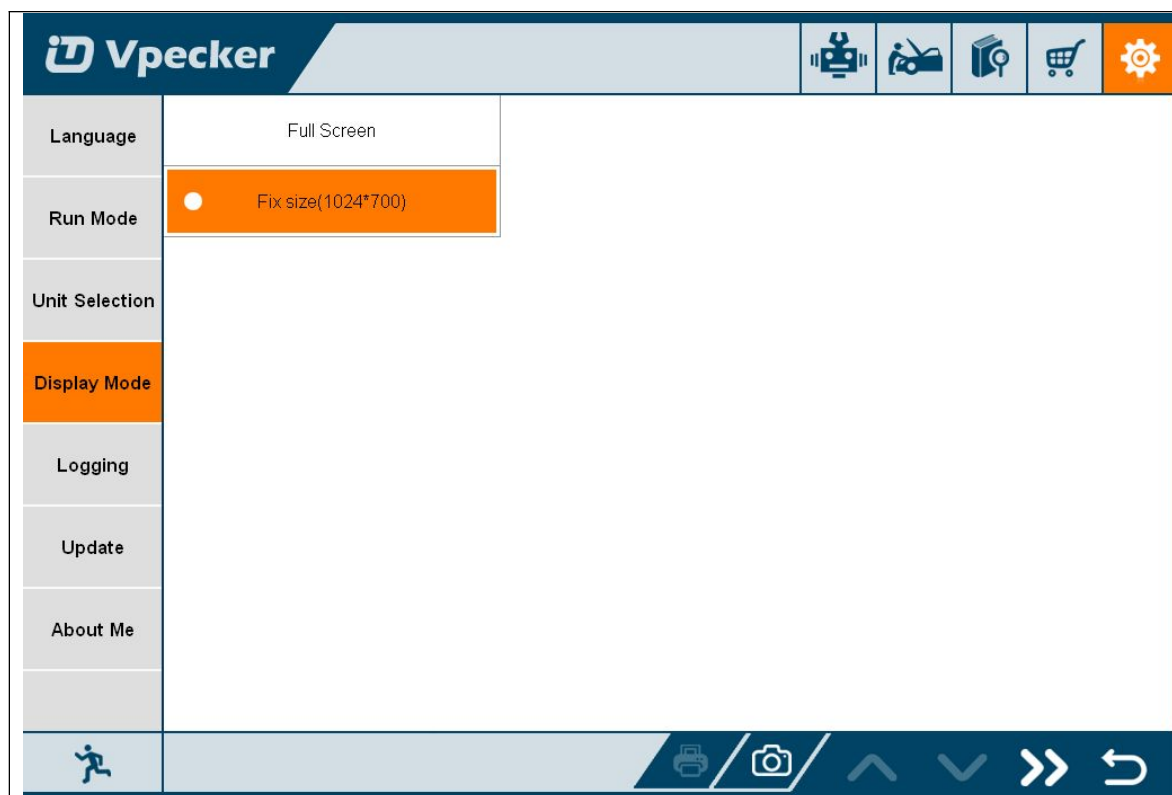
#### 4.4.3 Unit selection

Unit switch between Metric and Imperial system:



#### 4.4.4 Display mode

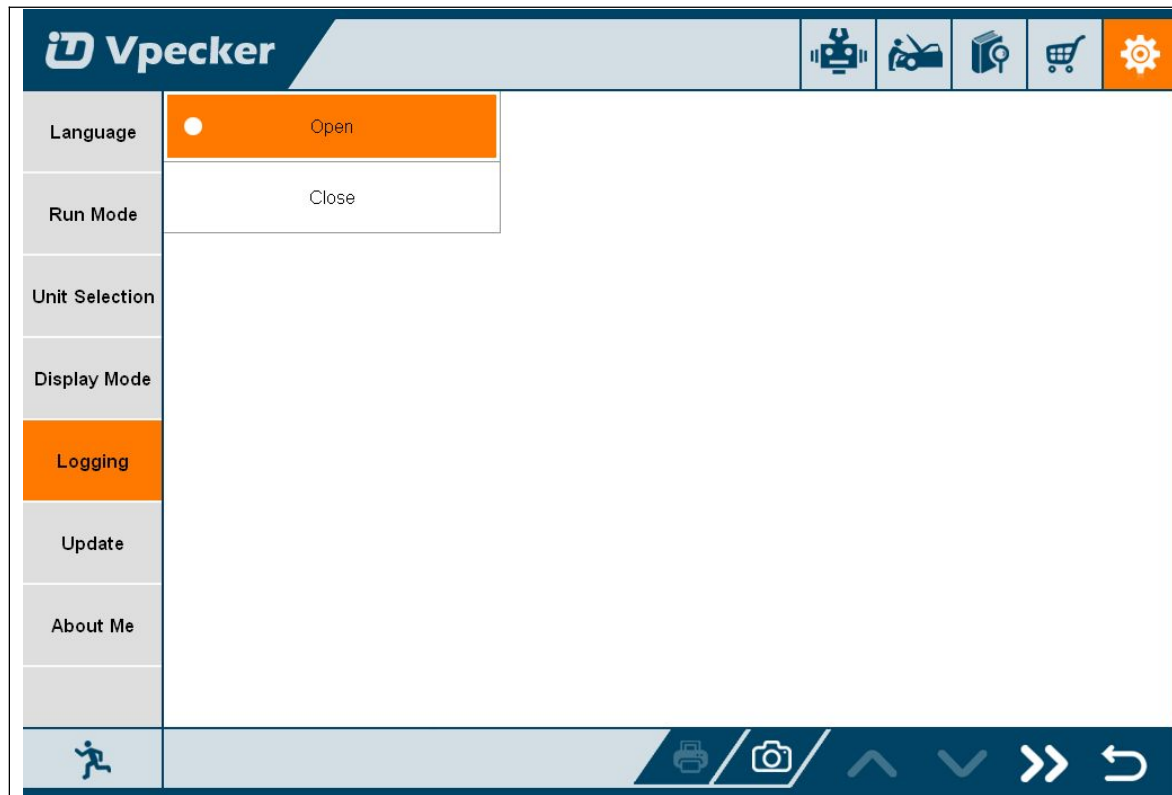
Display modes between Full Screen and Fixed Size(1024 x 700):





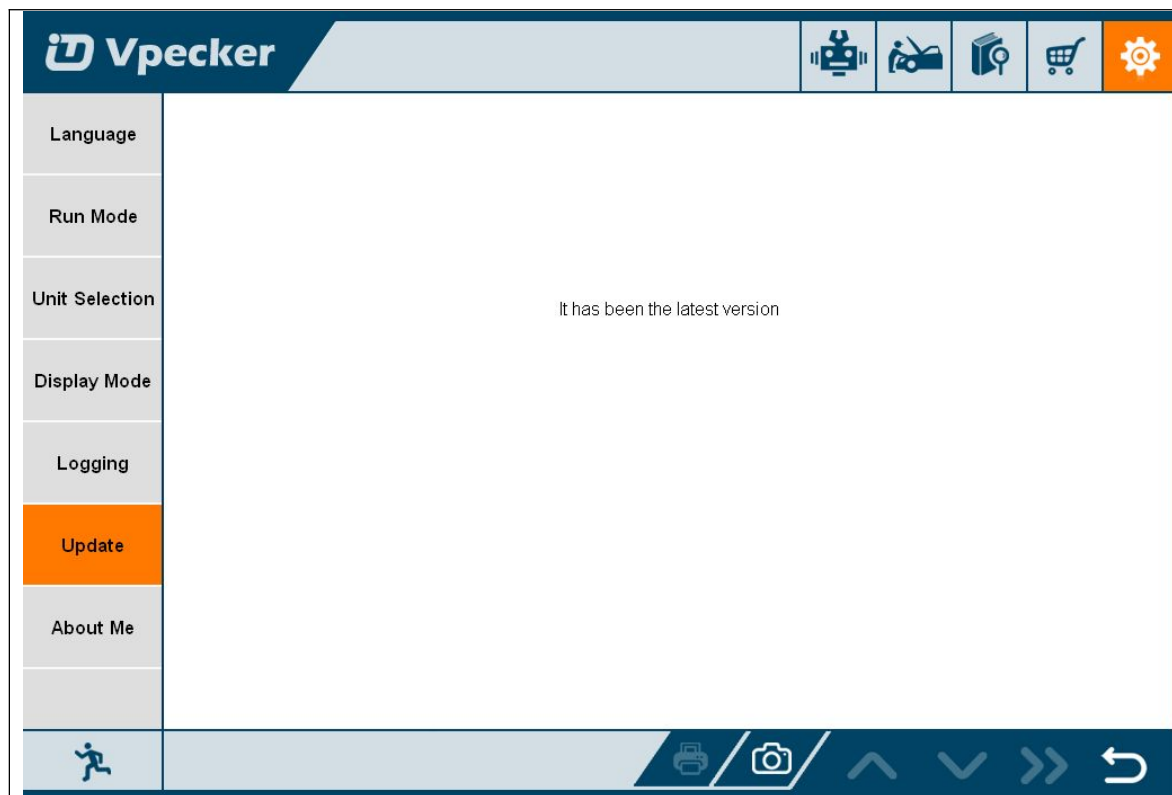
**4.4.5 Logging**

Logging function is available; it can log the date of vehicle communication.



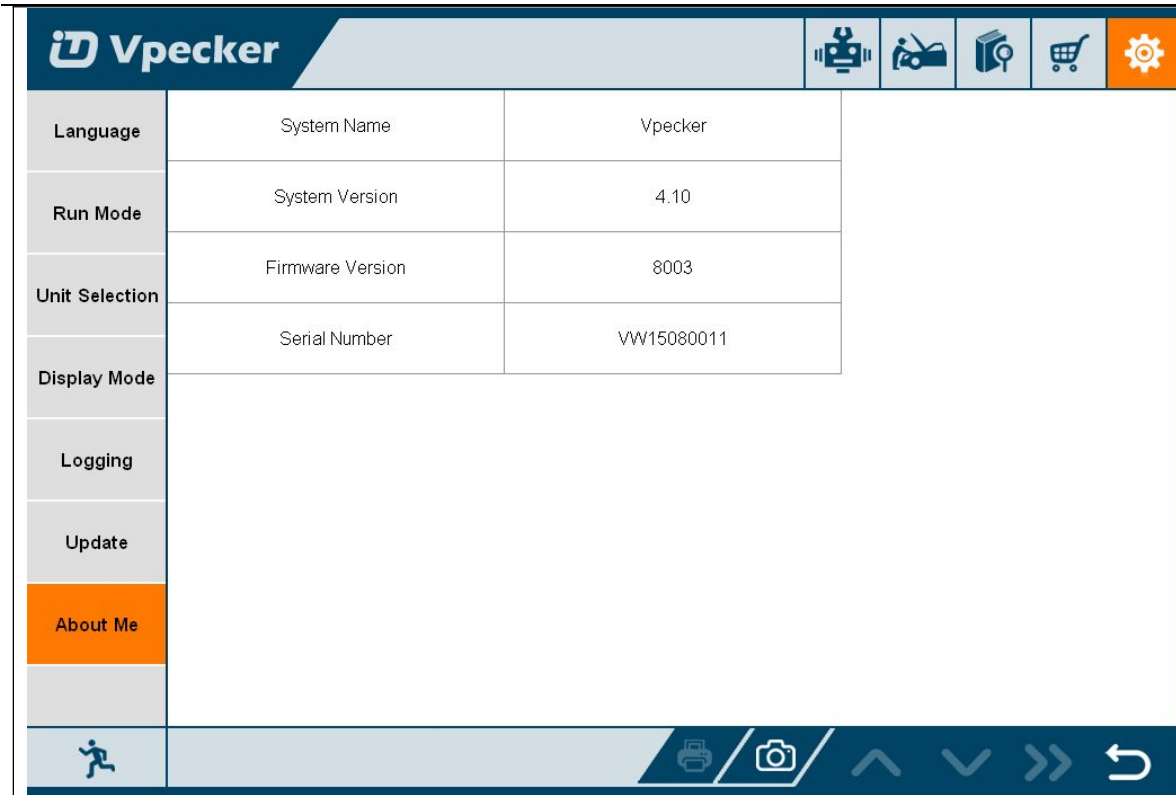
**4.4.5 Update**

If there is a new version, it can automatically prompt to update.



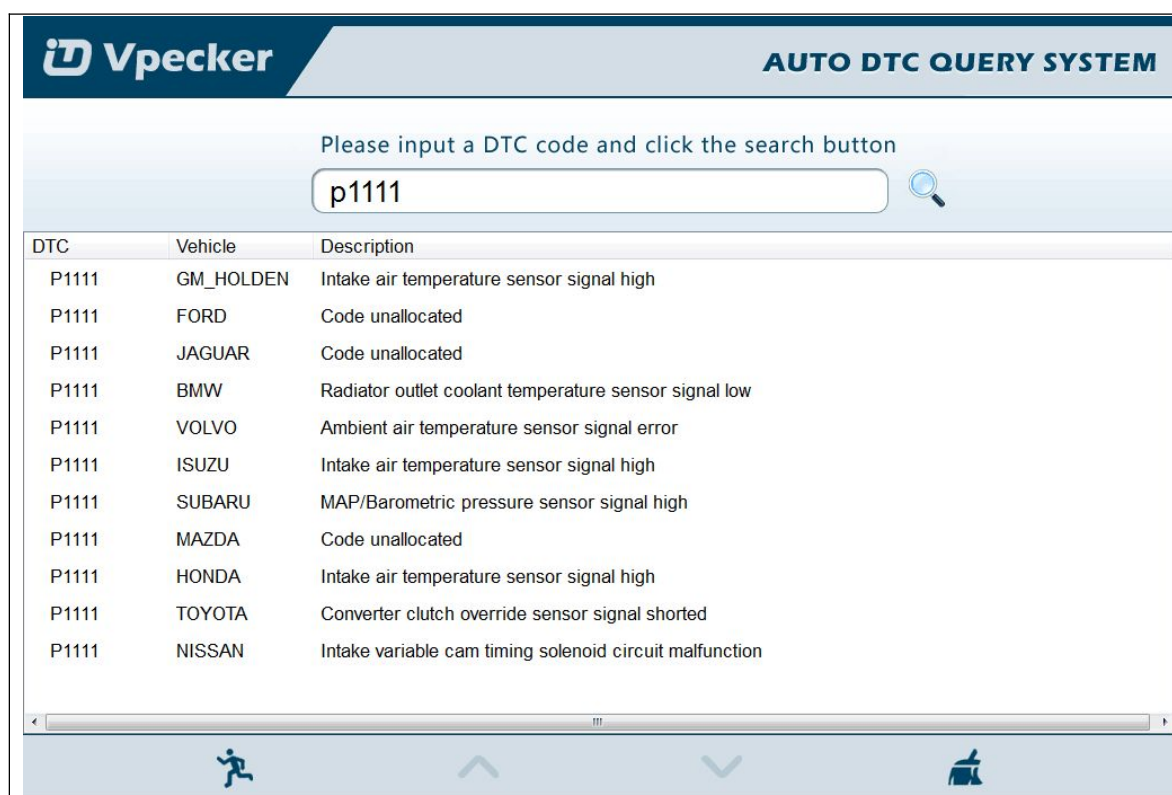
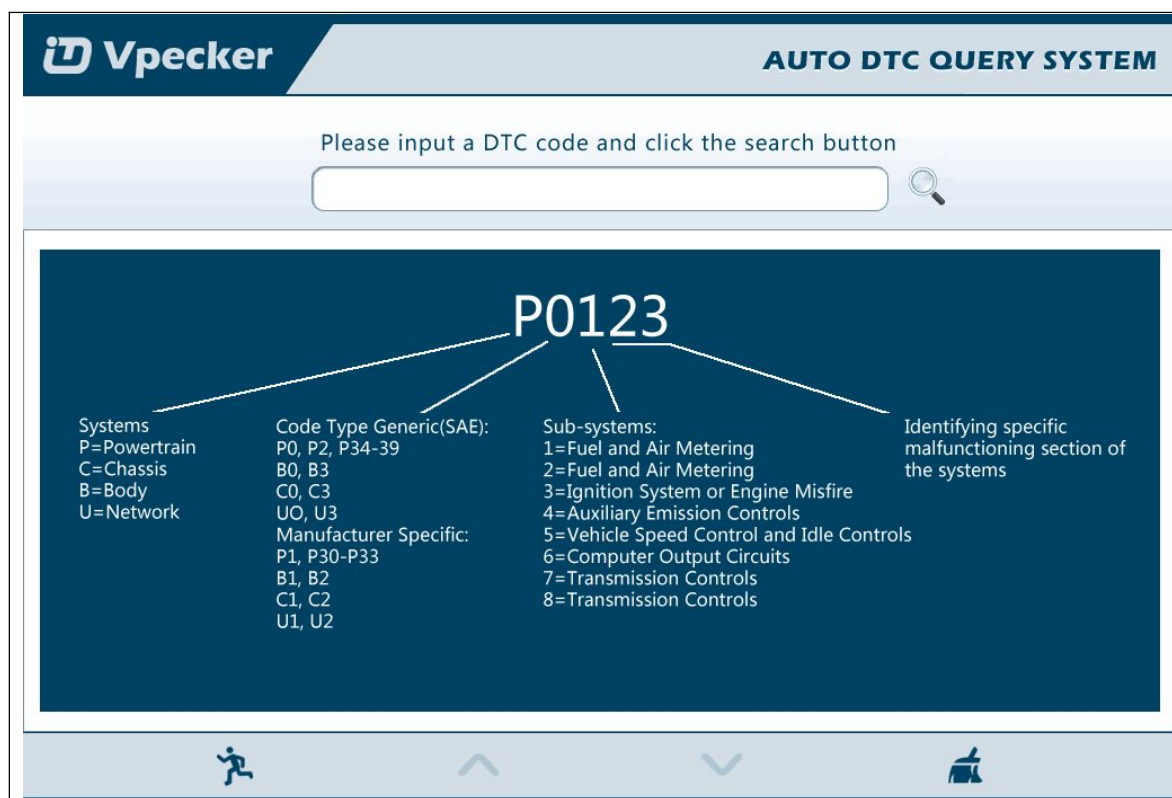
**4.4.6 About me**

Automatically identify VPECKER and VPECKER version information, when connection has problem (Wi-Fi or Bluetooth), and it can't read VPECKER Hardware version, usually, it shows as "Unknown" or "---"; If the connection is OK, it shows hardware version. As the picture shows:



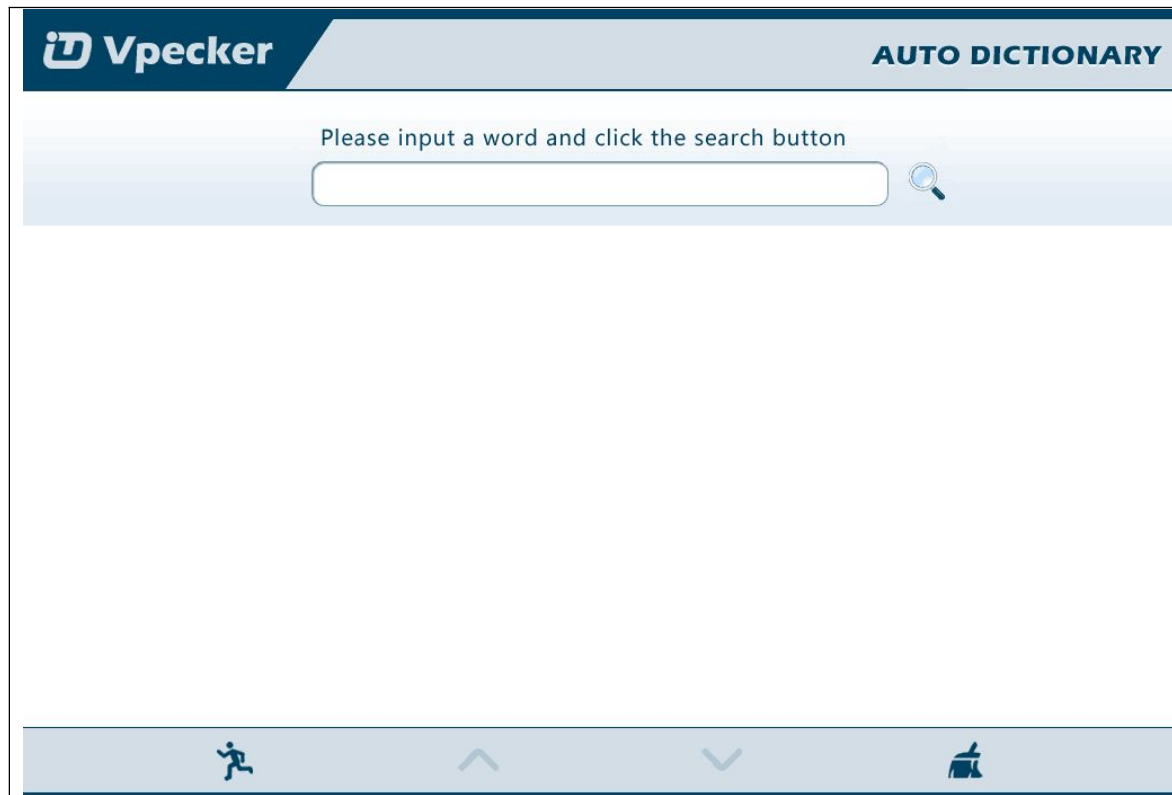
## 4.5 DTC query

DTC query function is a DIY function, users can query, modify and create OBD DTCs by themselves requirement in local DTCs, and users can synchronize to TDINTEL company cloud server thought the internet too.



### 4.6 Dictionary

Dictionary function is a DIY function, users can query, modify and create AUTO terms by themselves requirement in local terms, and users can synchronize to TDINTEL company cloud server through the internet too.



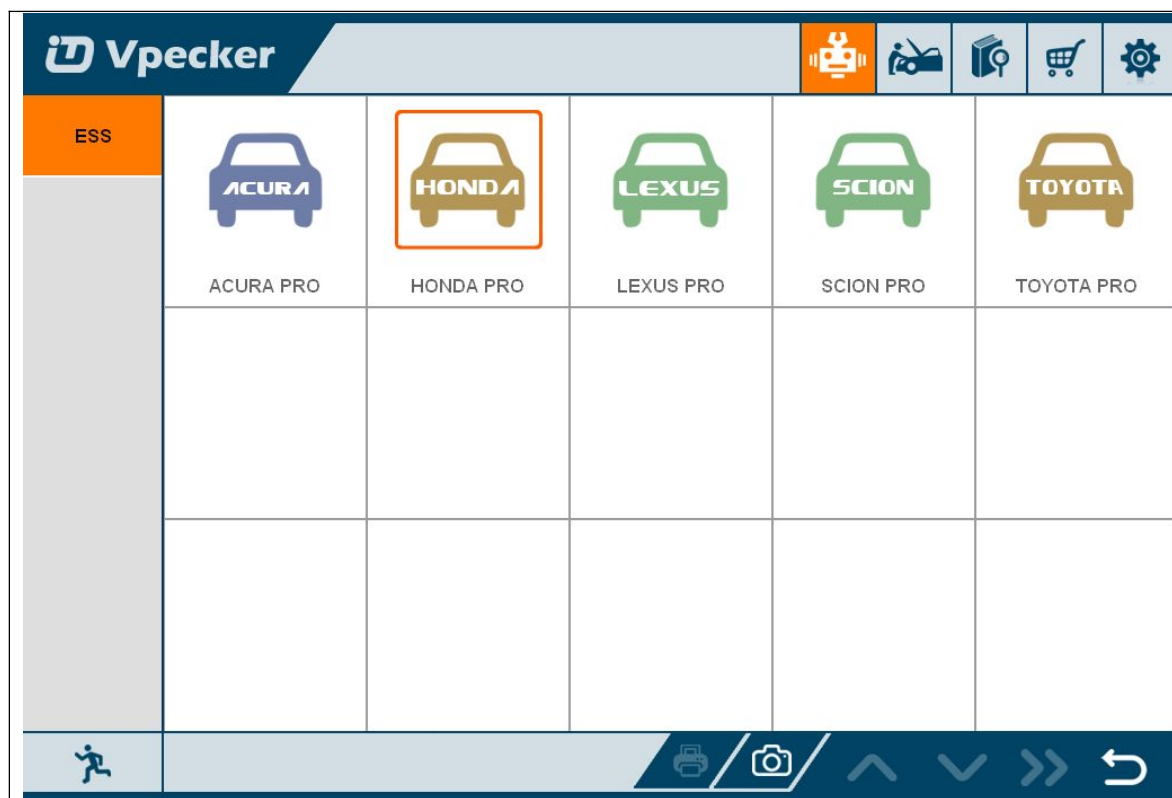
### 4.7 Example

#### 4.7.1 Communication

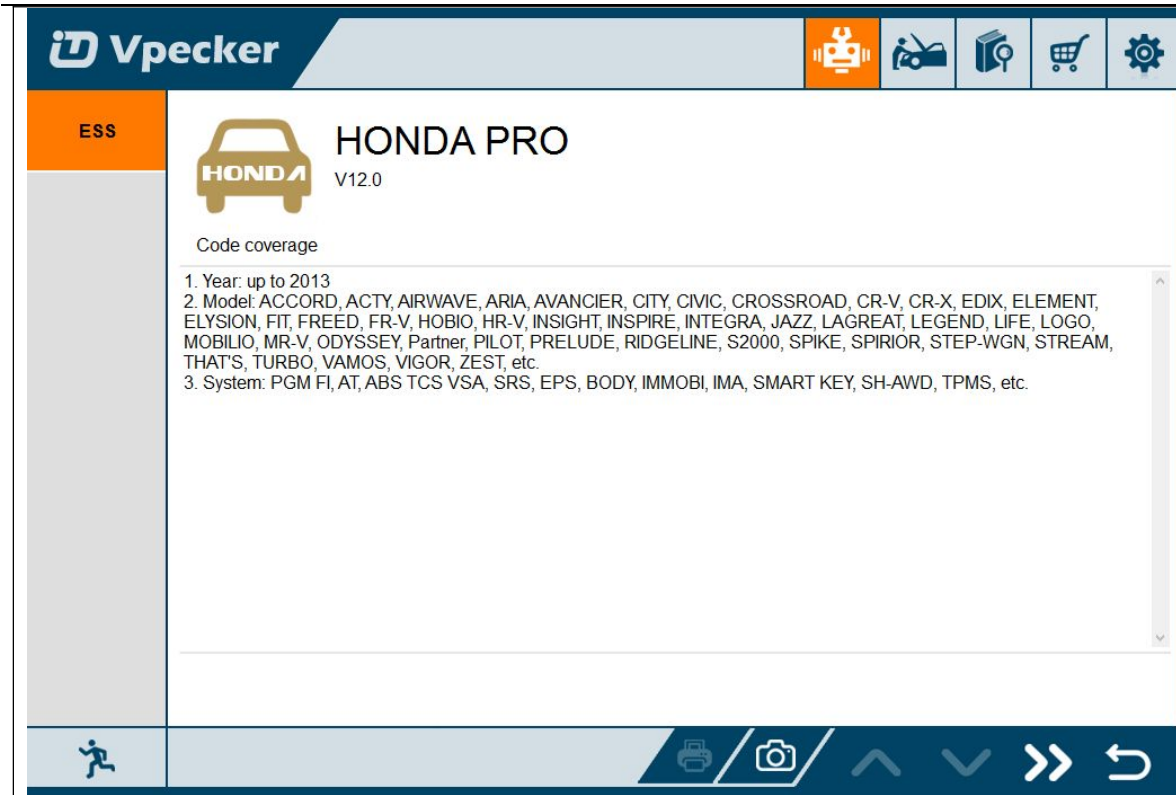
Please connect VPECKER with the car. After connection, the indication light turn on red.

Please check the connection of Wi-Fi or Bluetooth, if connect successfully, the indication light will turn to blue.

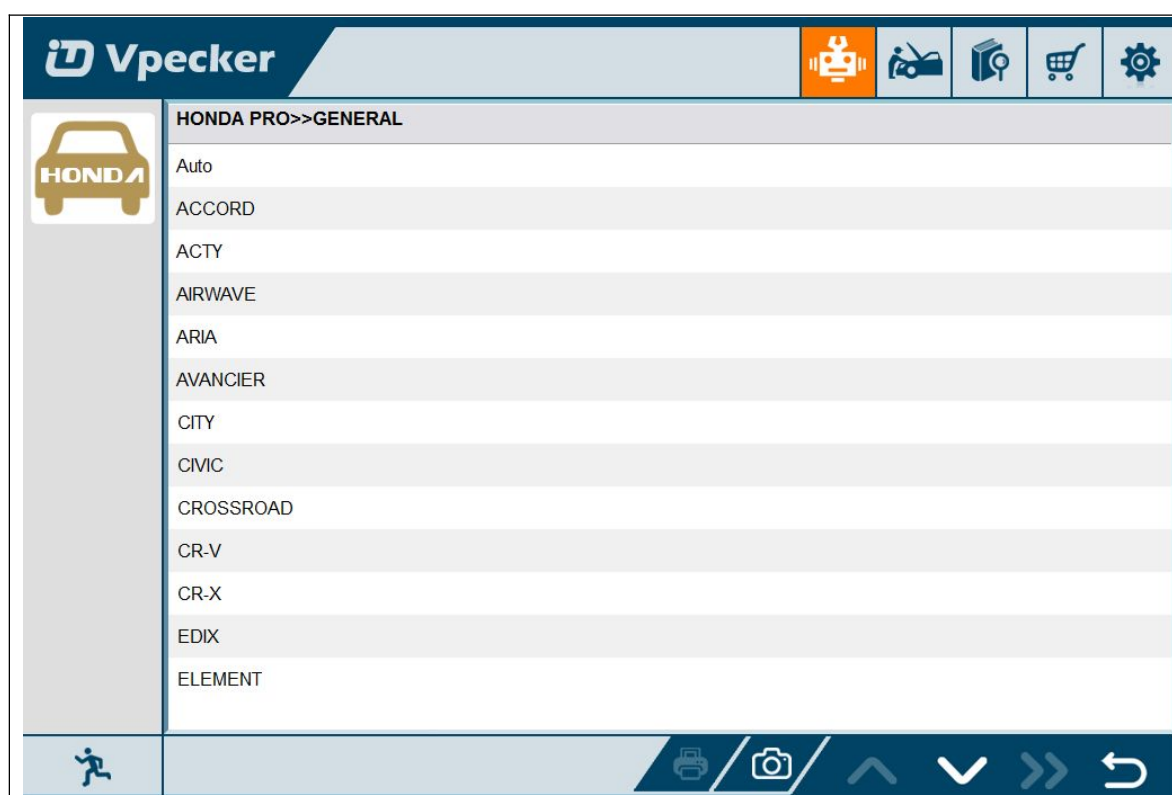
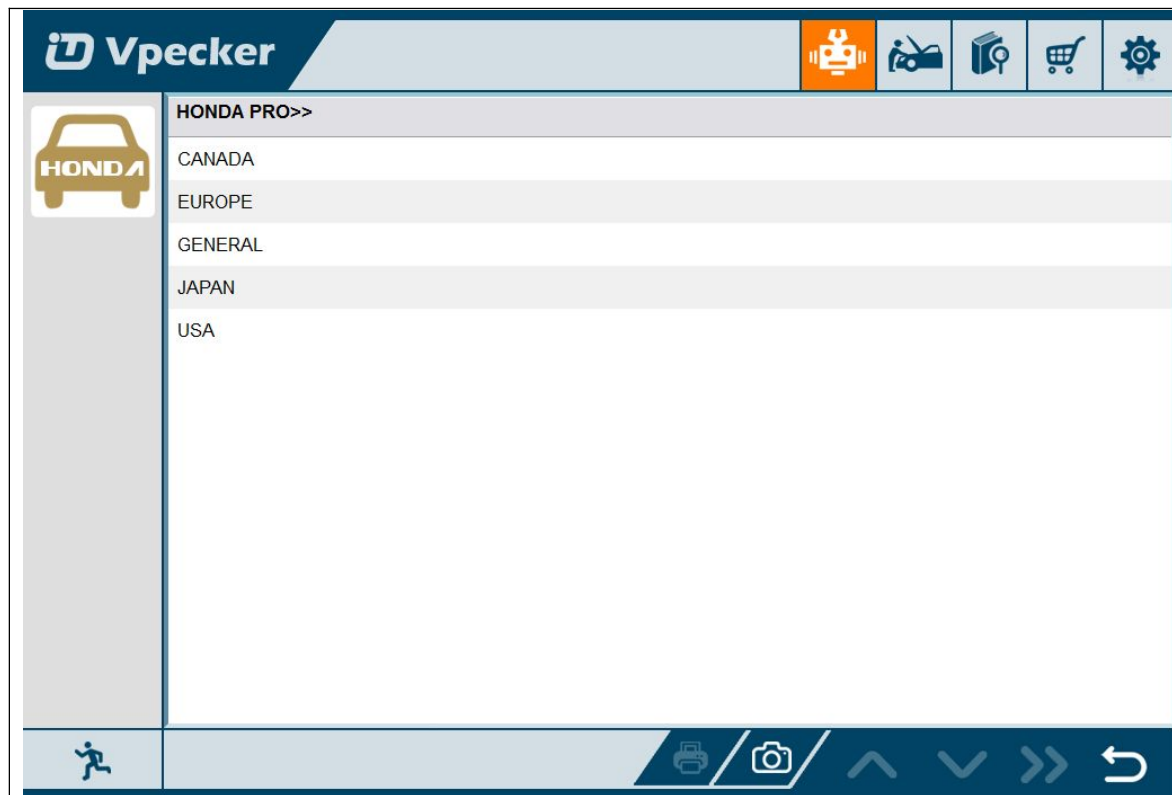
Run the VPECKER, and start to diagnose.

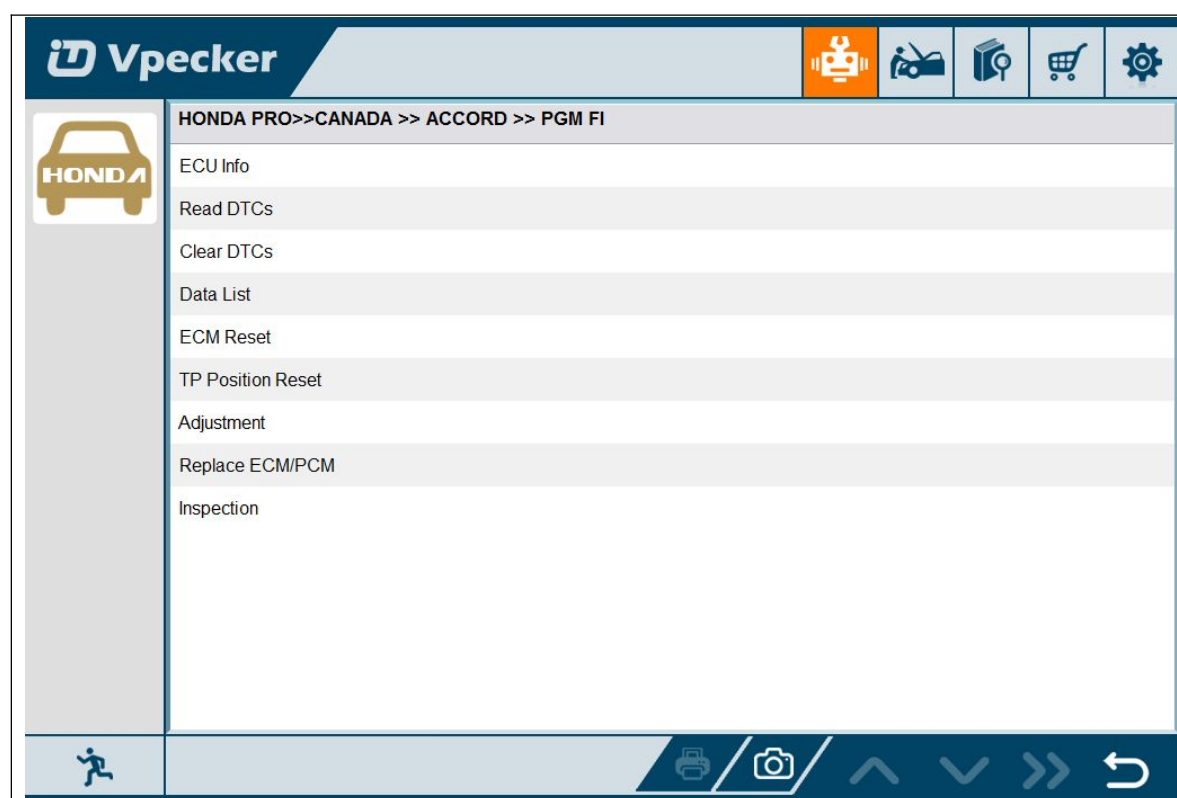
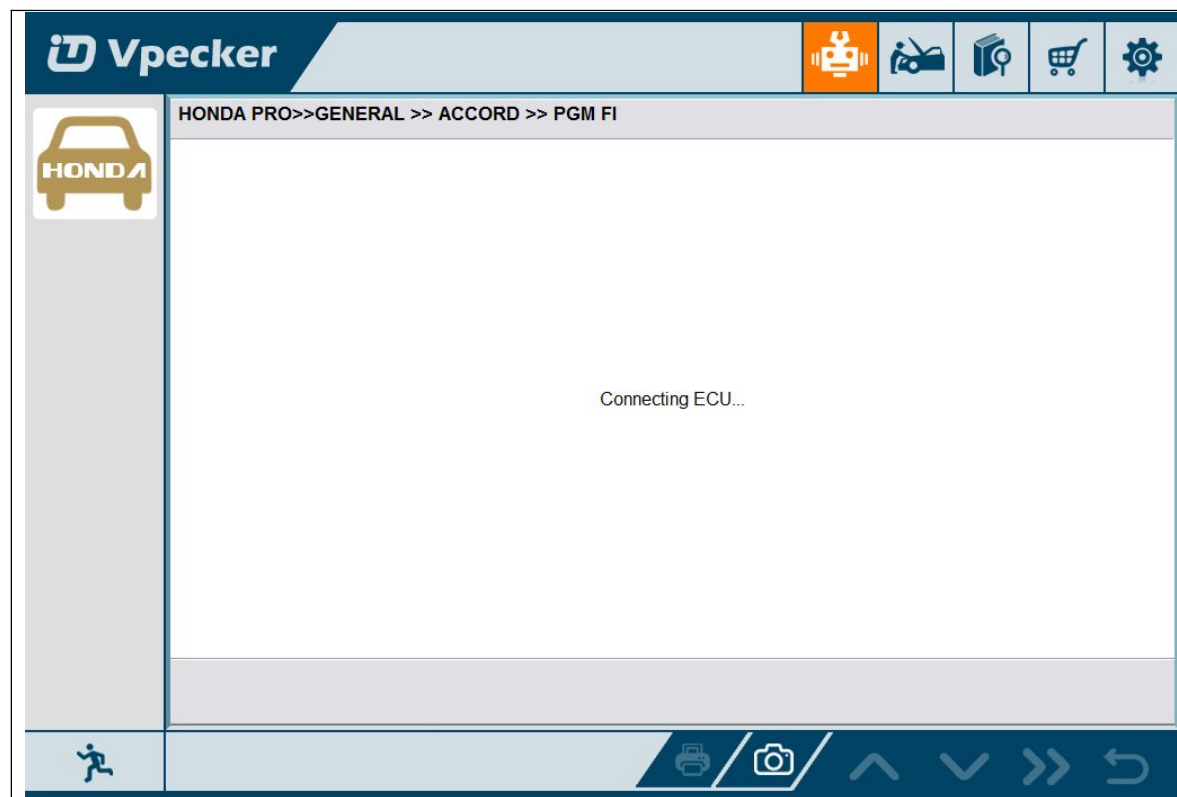
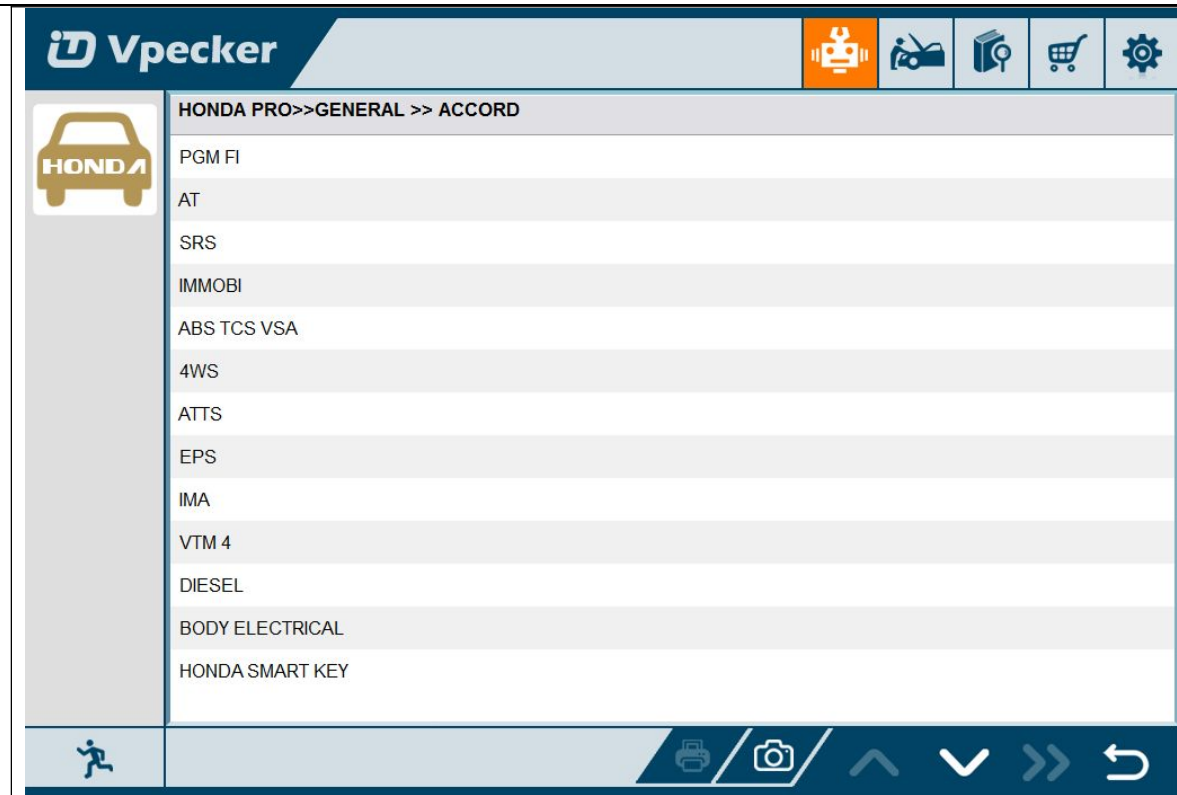


Choose the vehicle you need, and enter the diagnostic system:

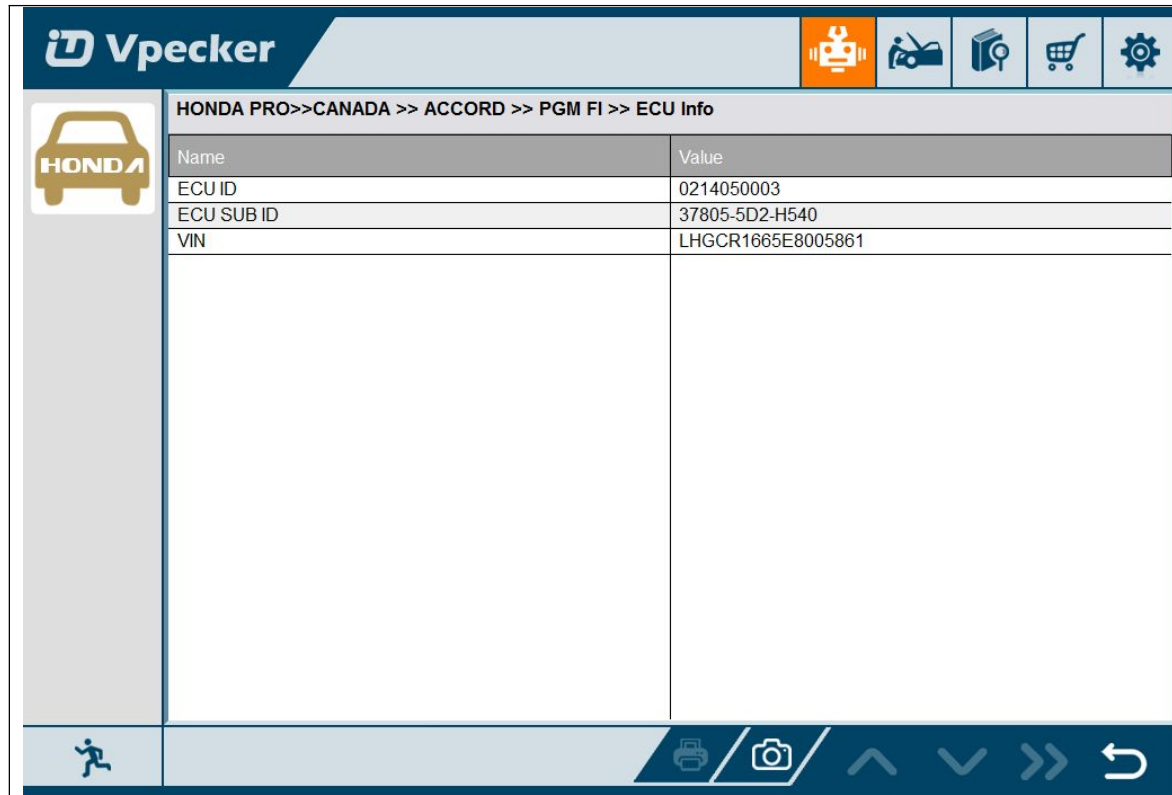


Please press next page.

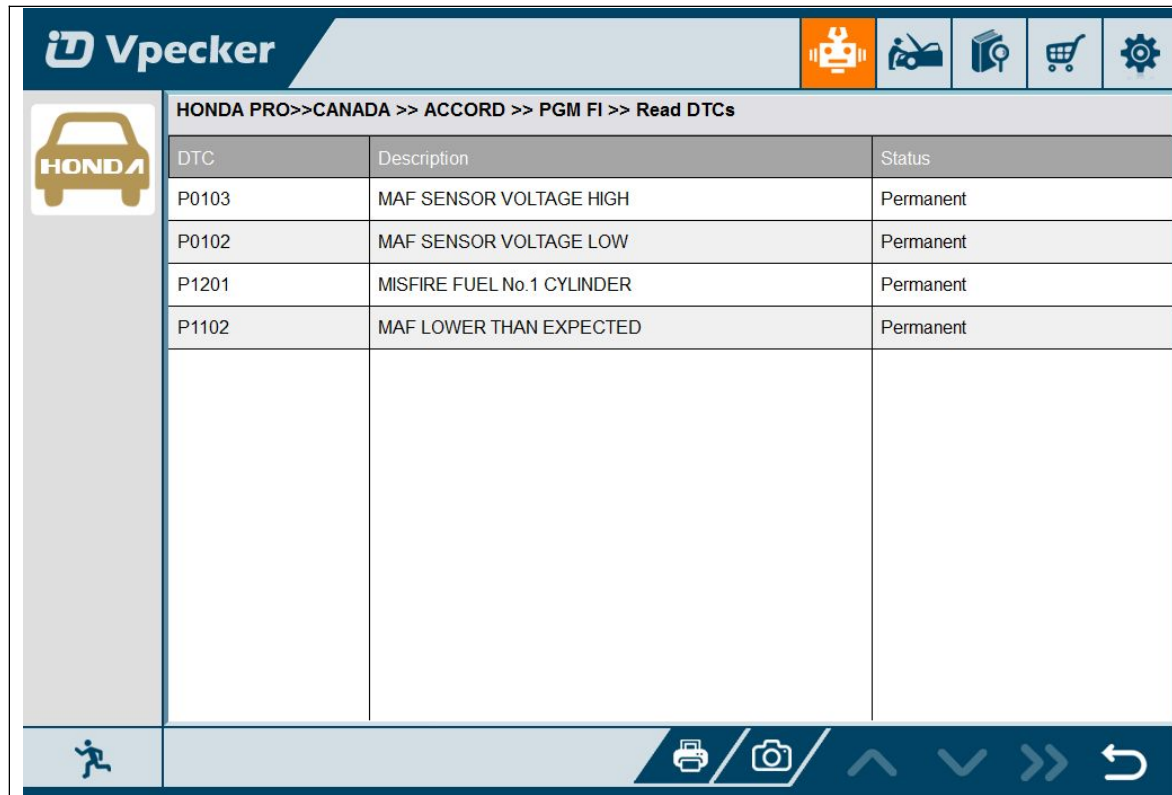




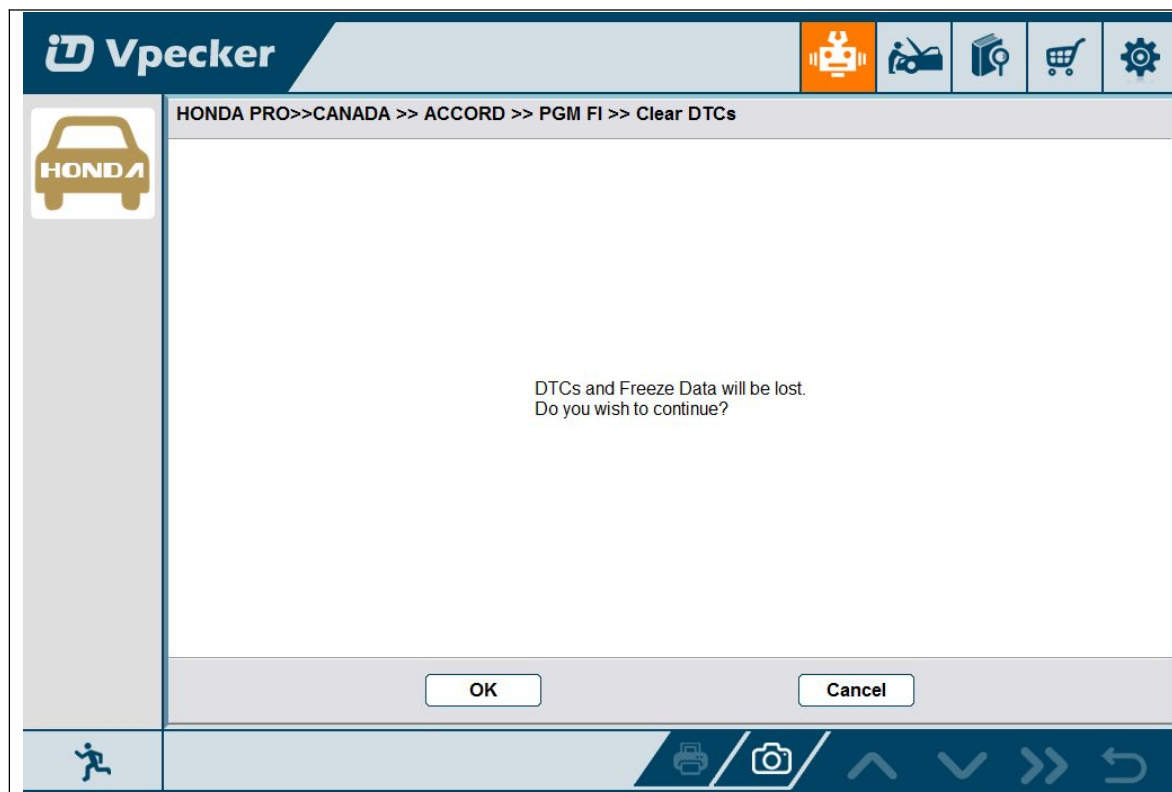
**4.7.2 Read ECU information**

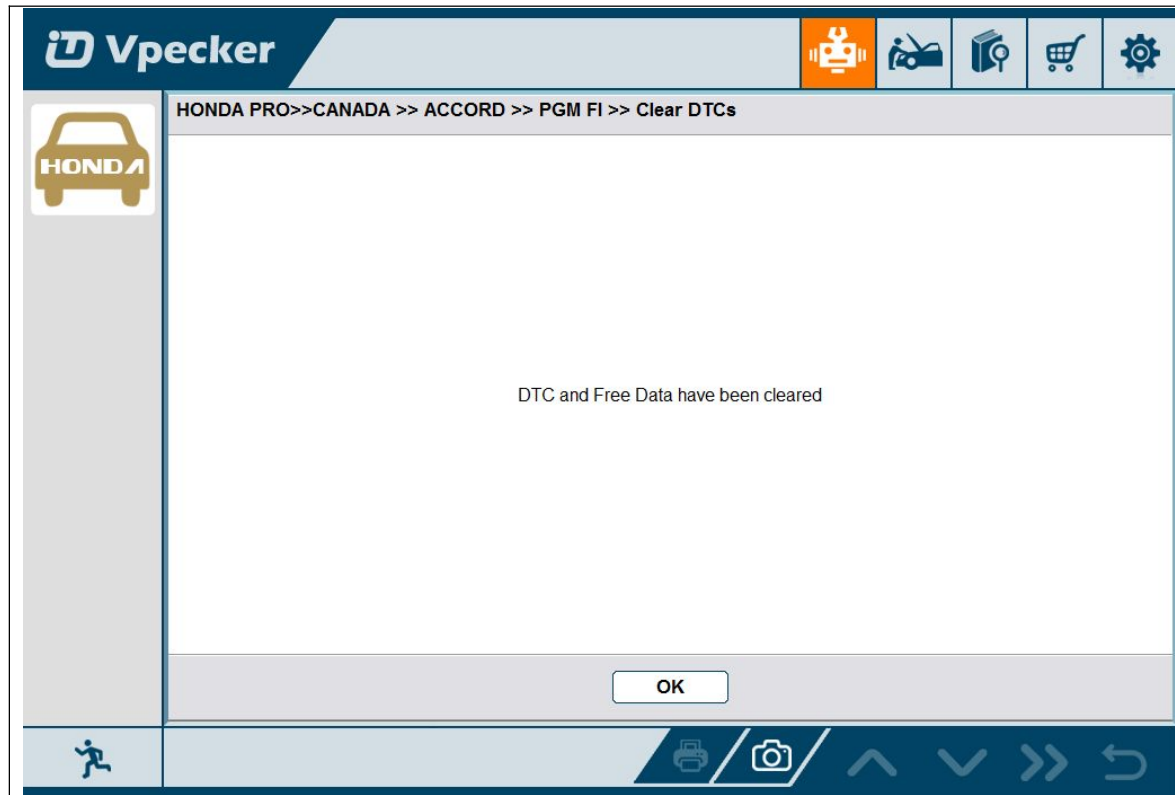


**4.7.3 Read DTCs**

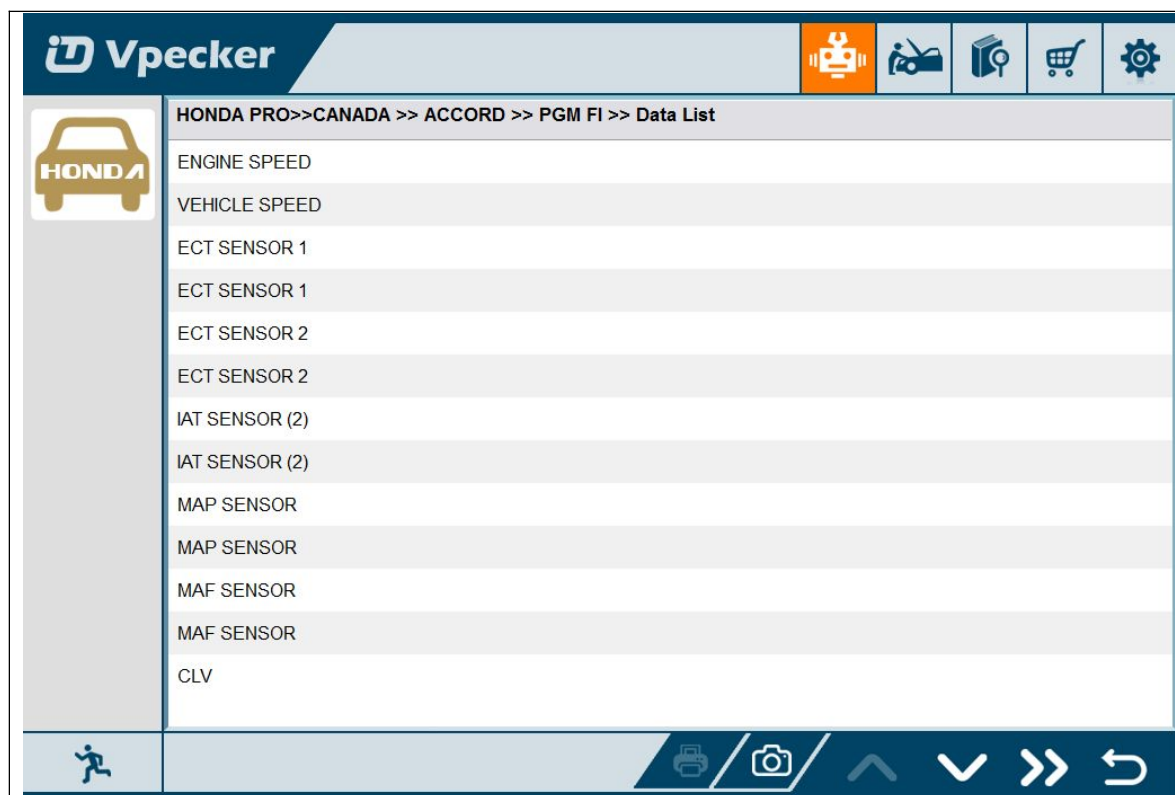


**4.7.4 Earse DTCs**

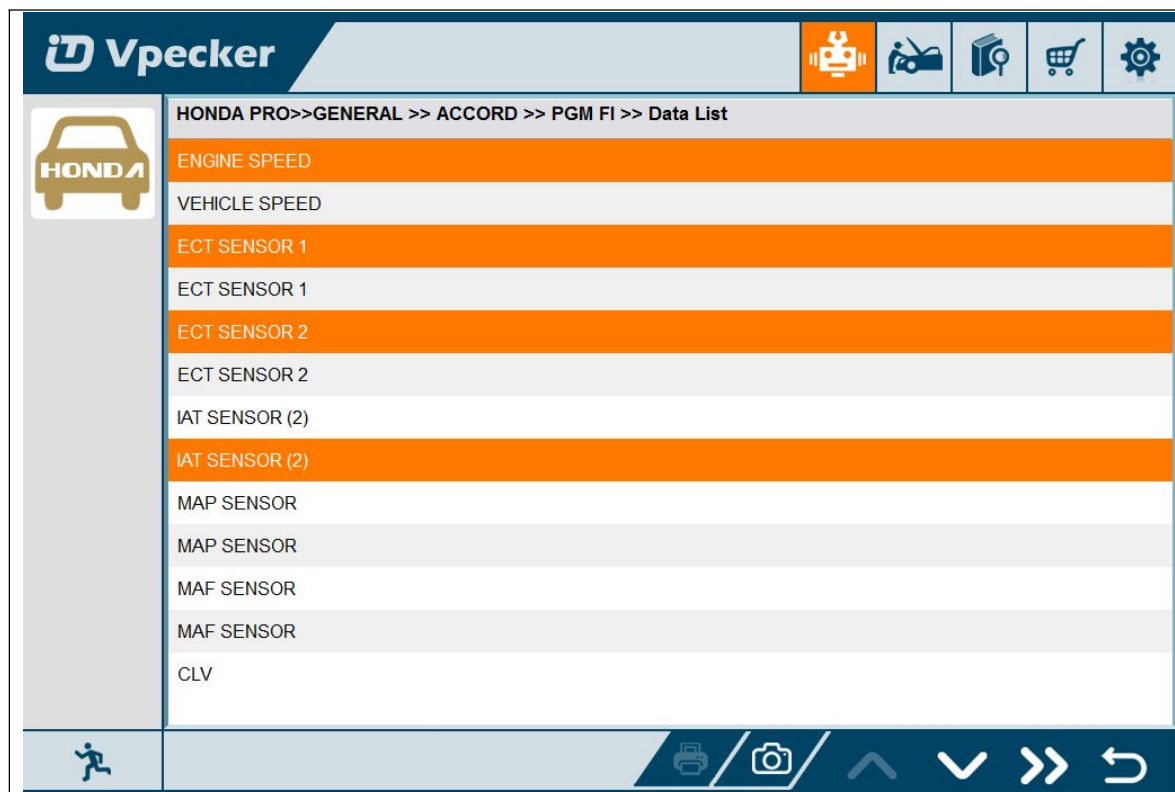


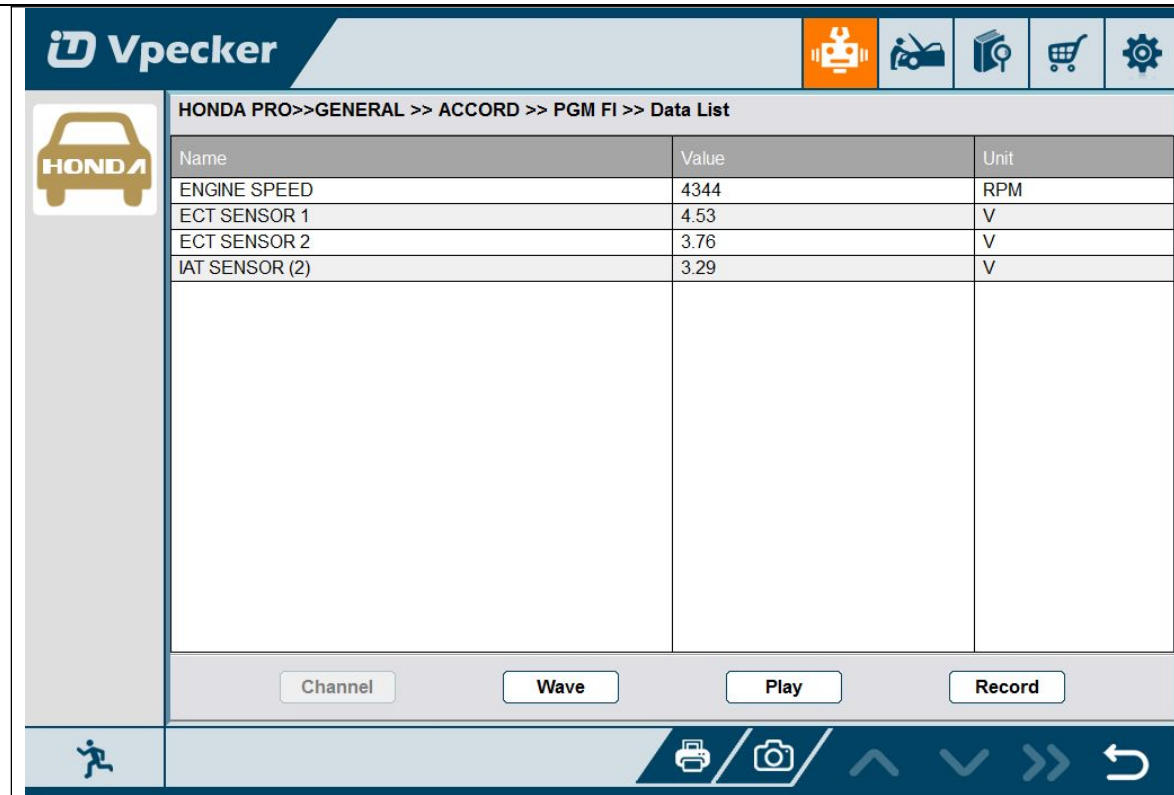


**4.7.5 Data List**

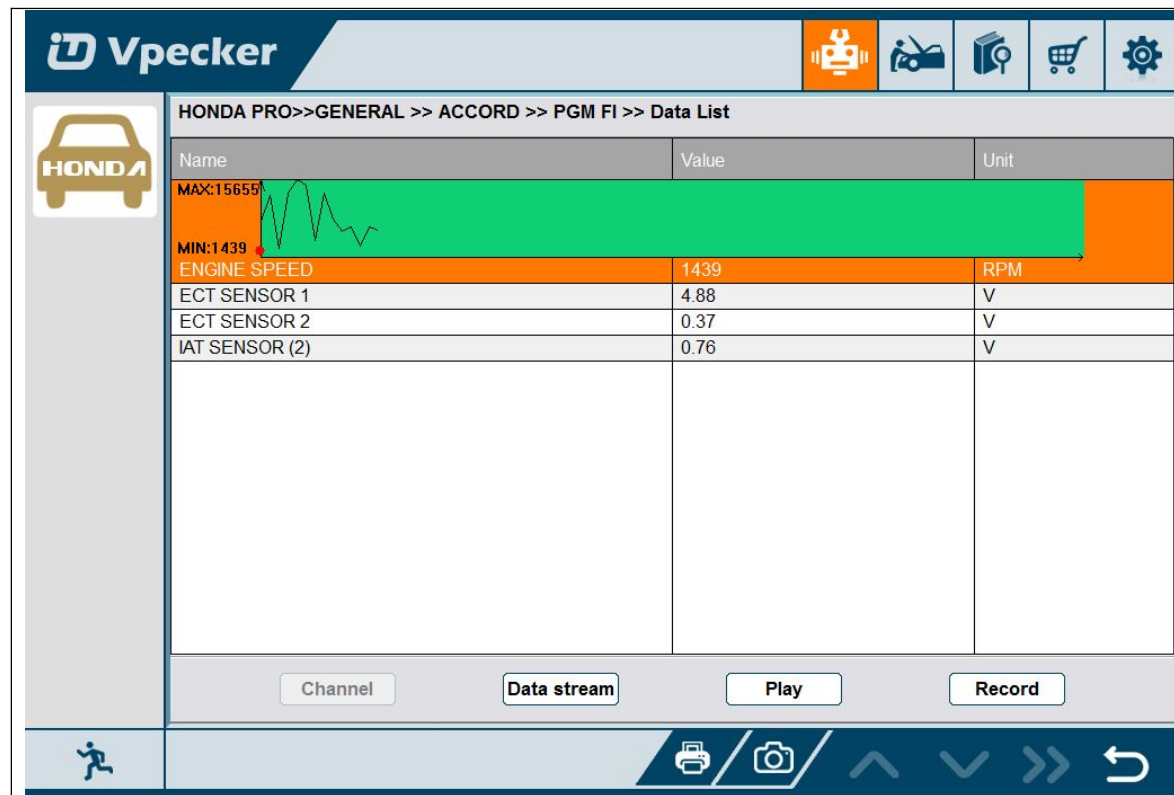


Select some items:

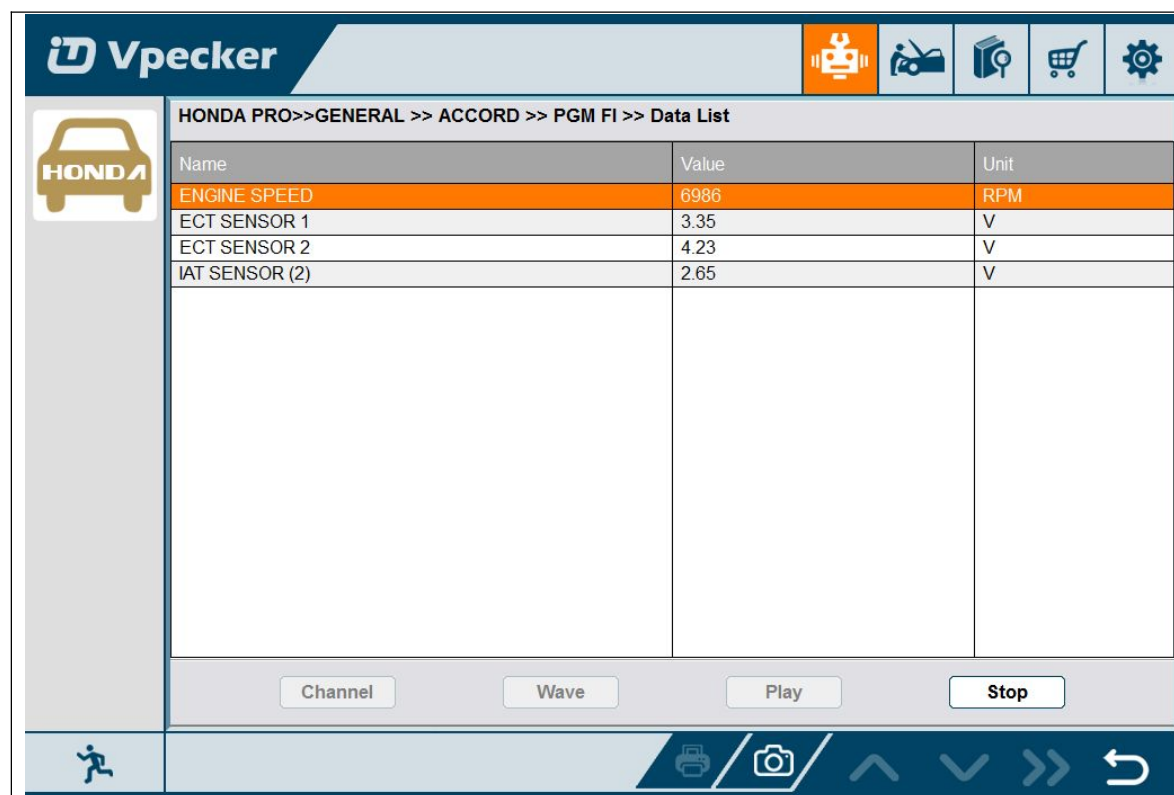




Select the 1st item, and click the Wave button:

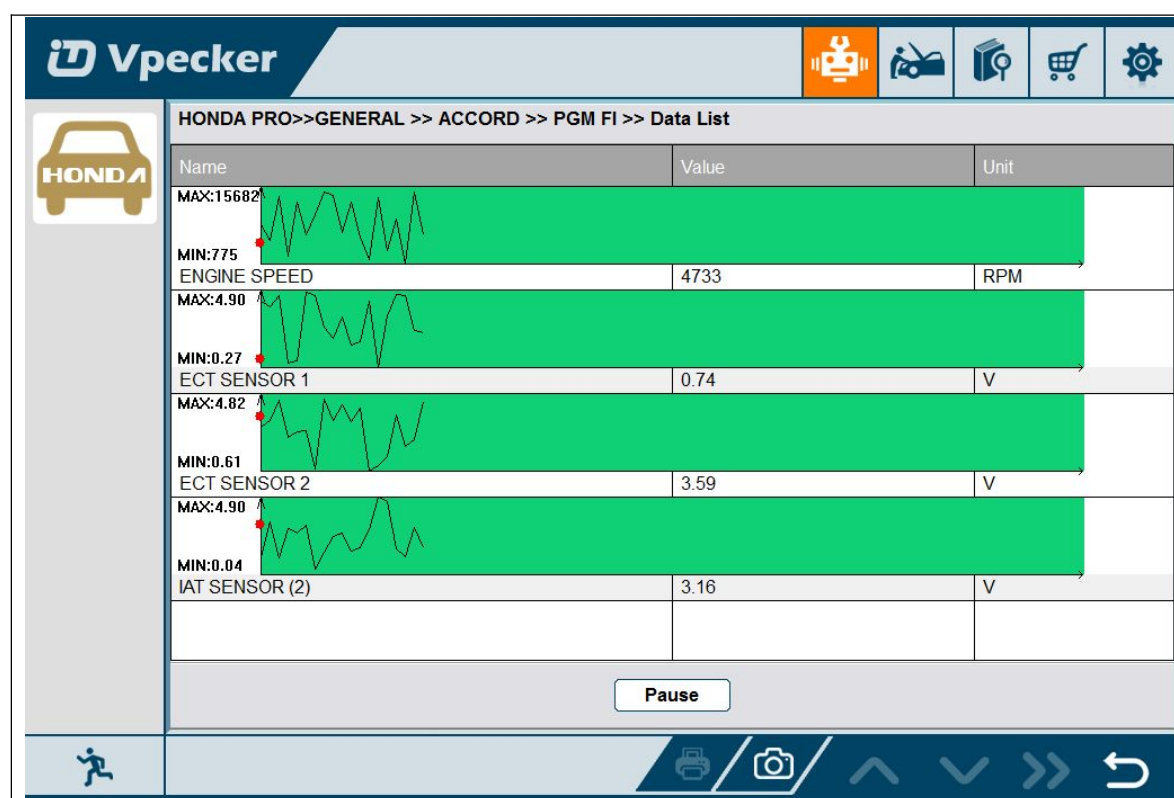
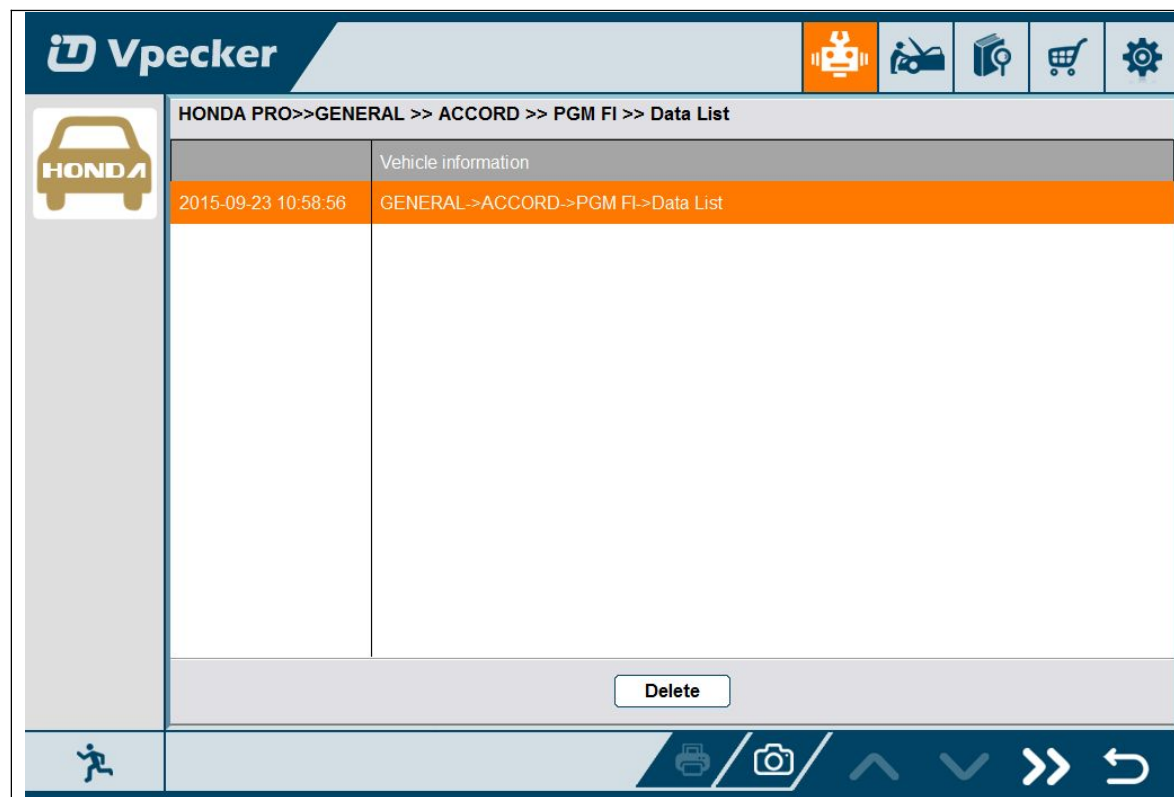
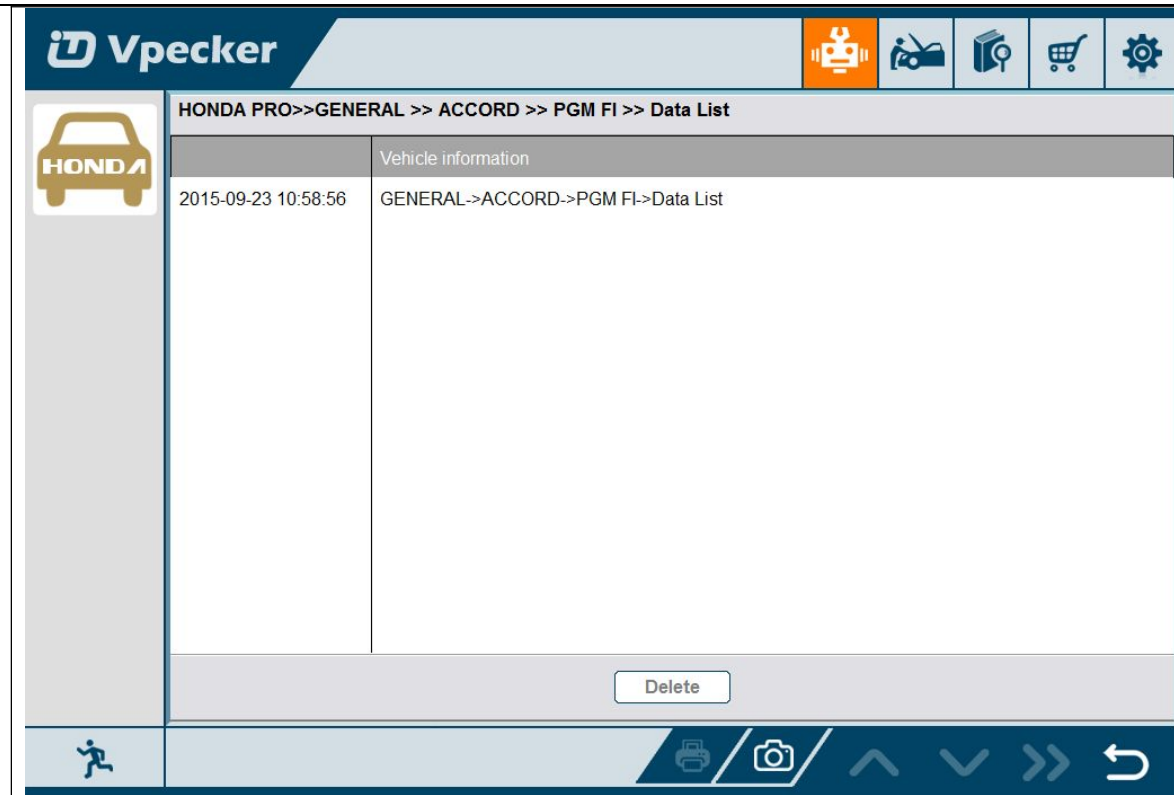


Click the Record button to start data recording, until to click Stop button to stop recording:

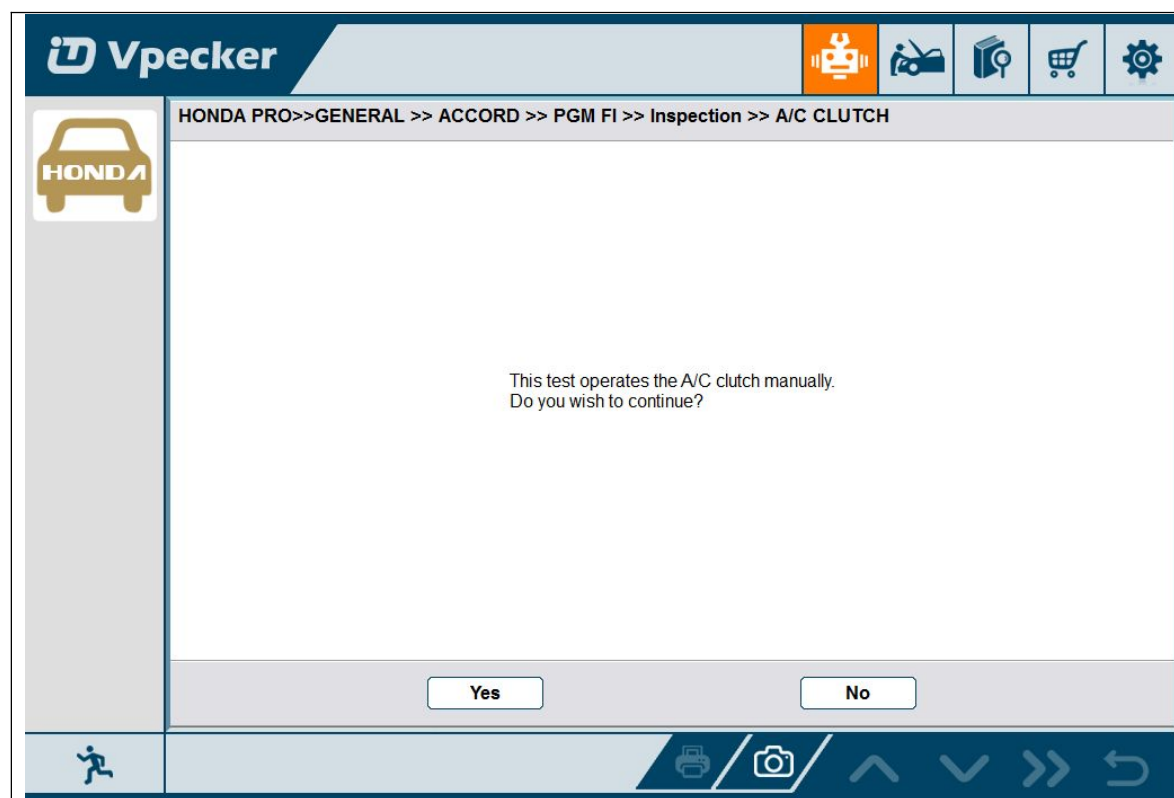
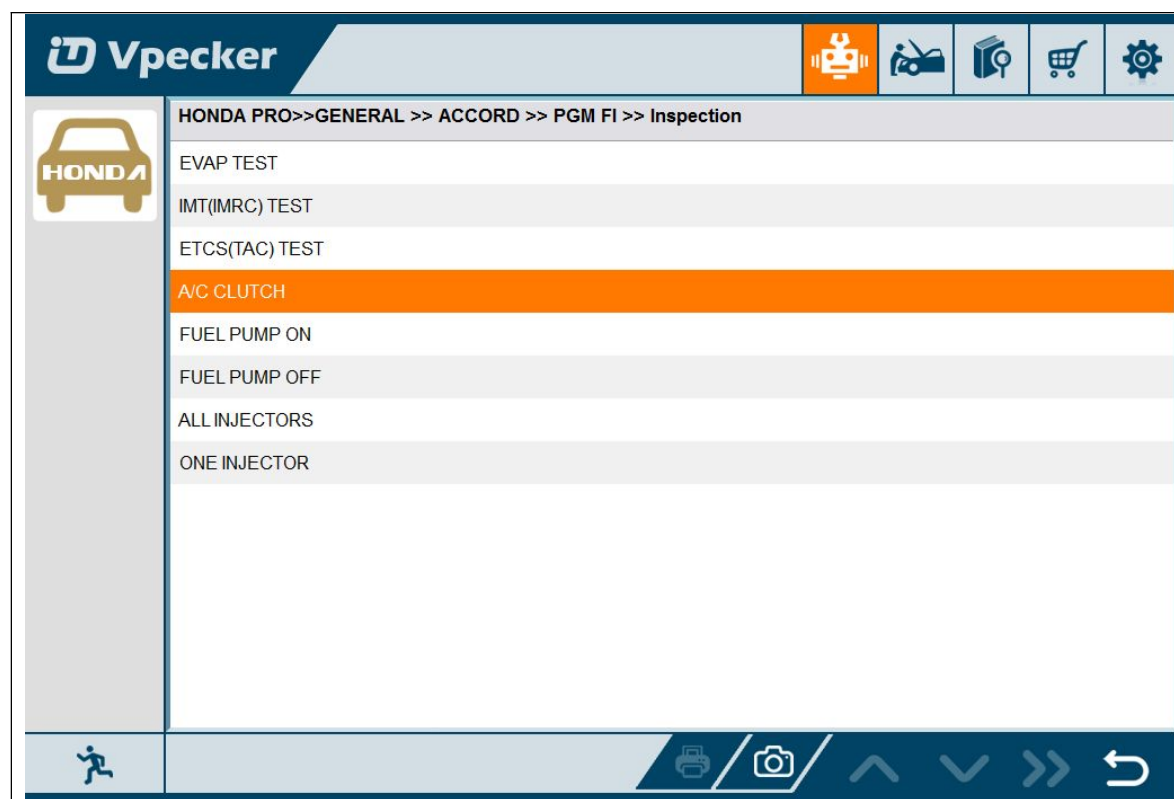
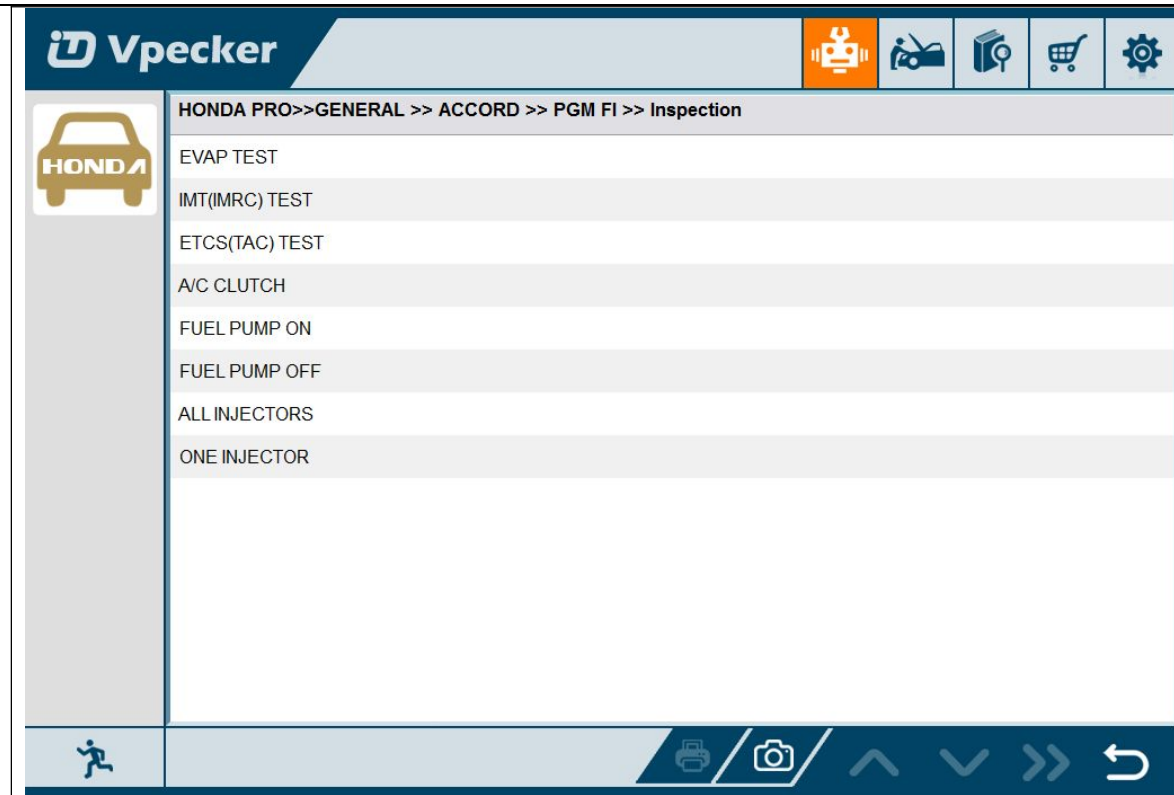


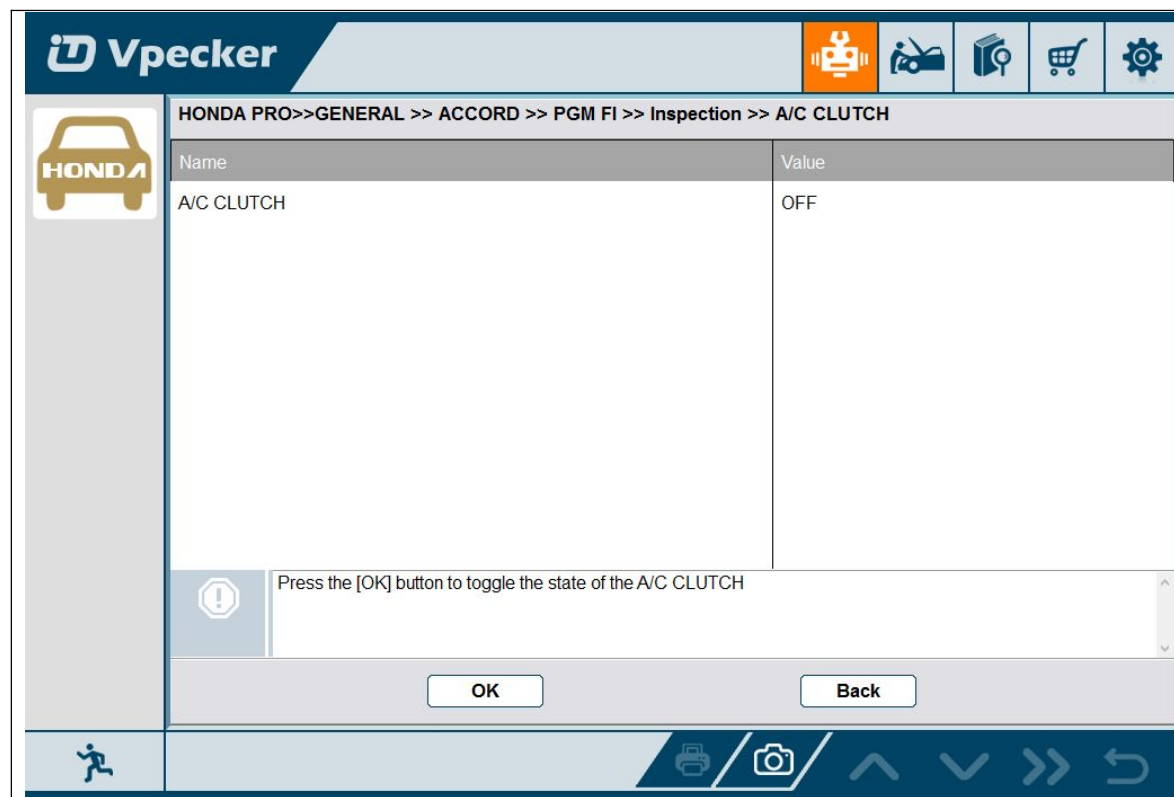
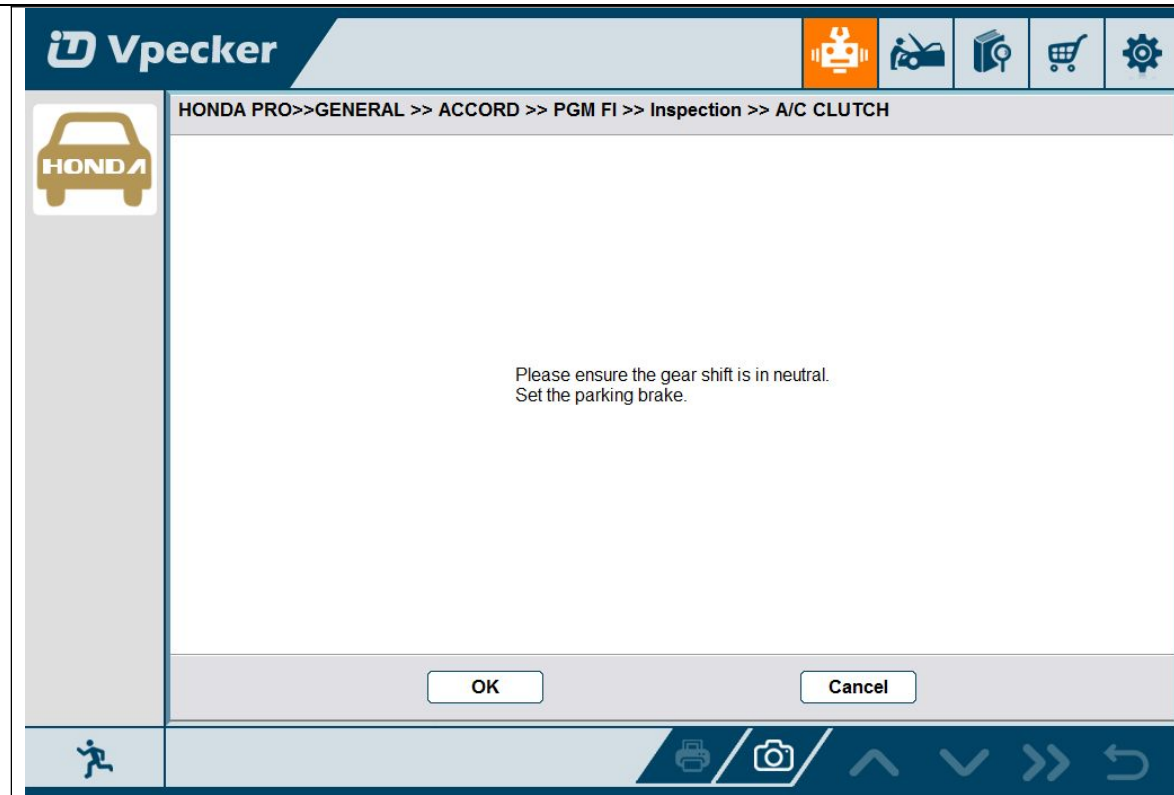
Click the Play button, it will show the recording data list, select one of them and replay the recording data:



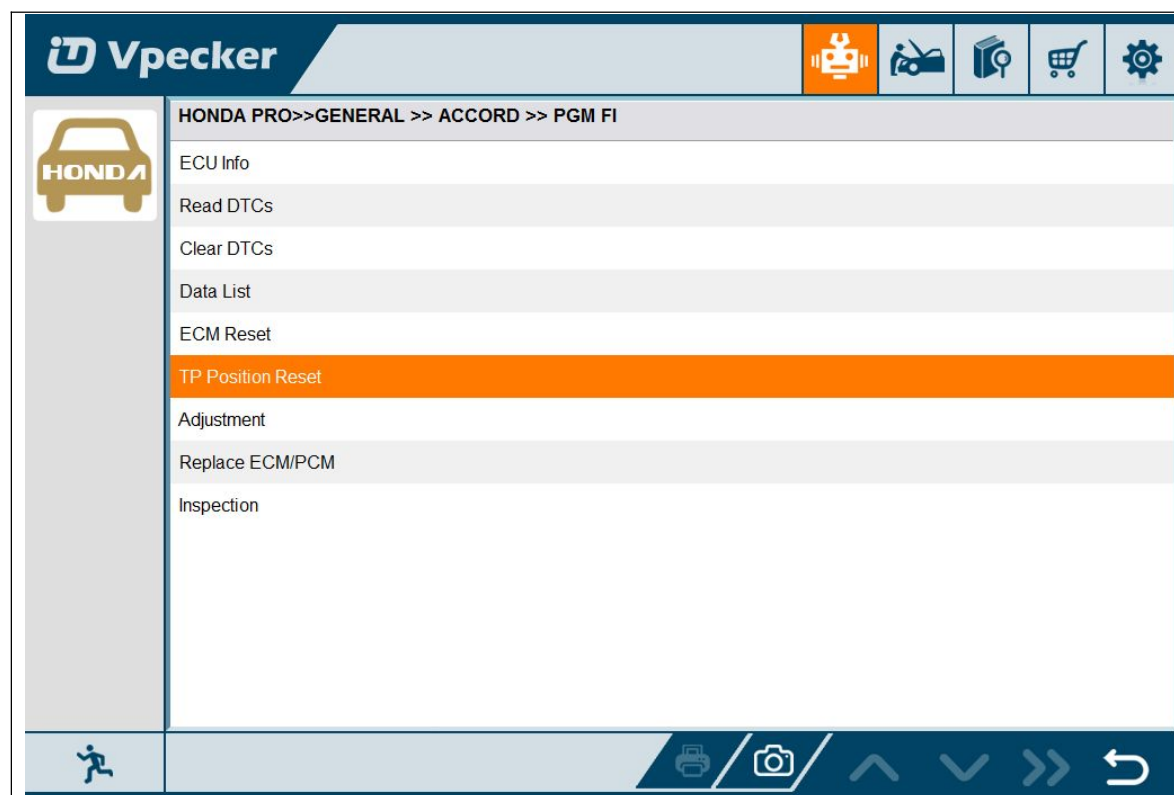


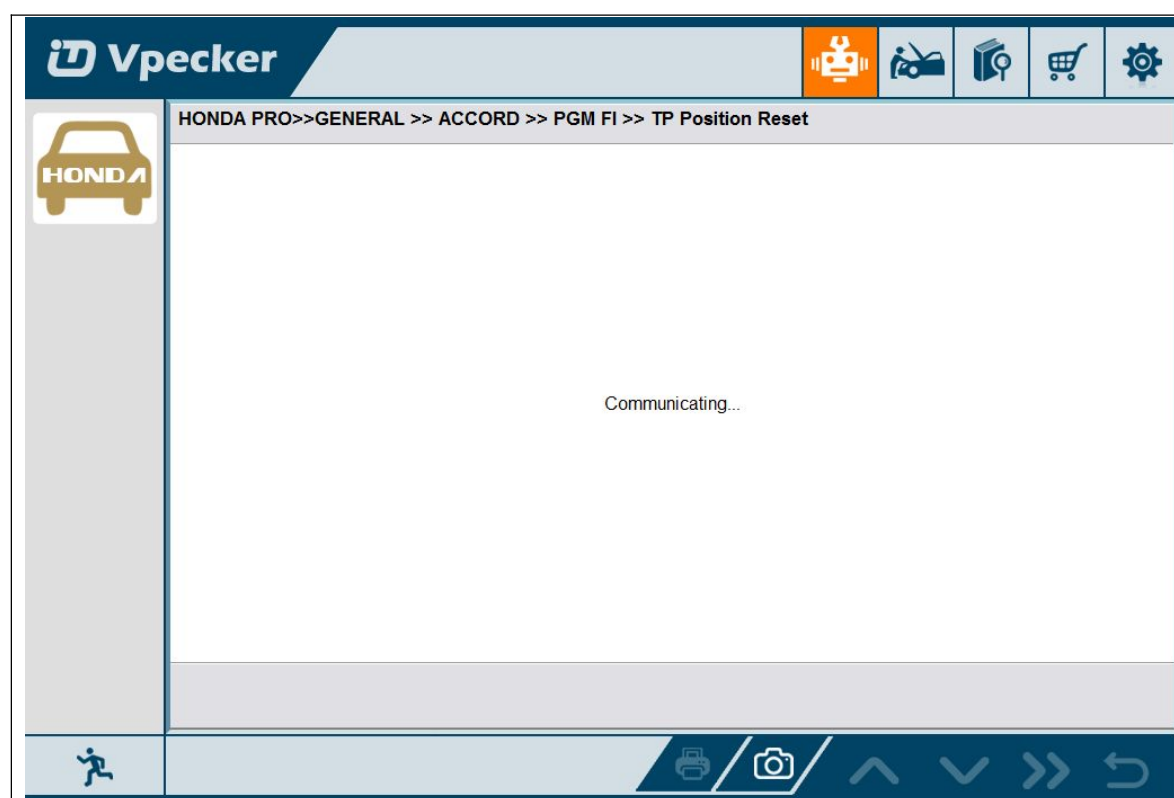
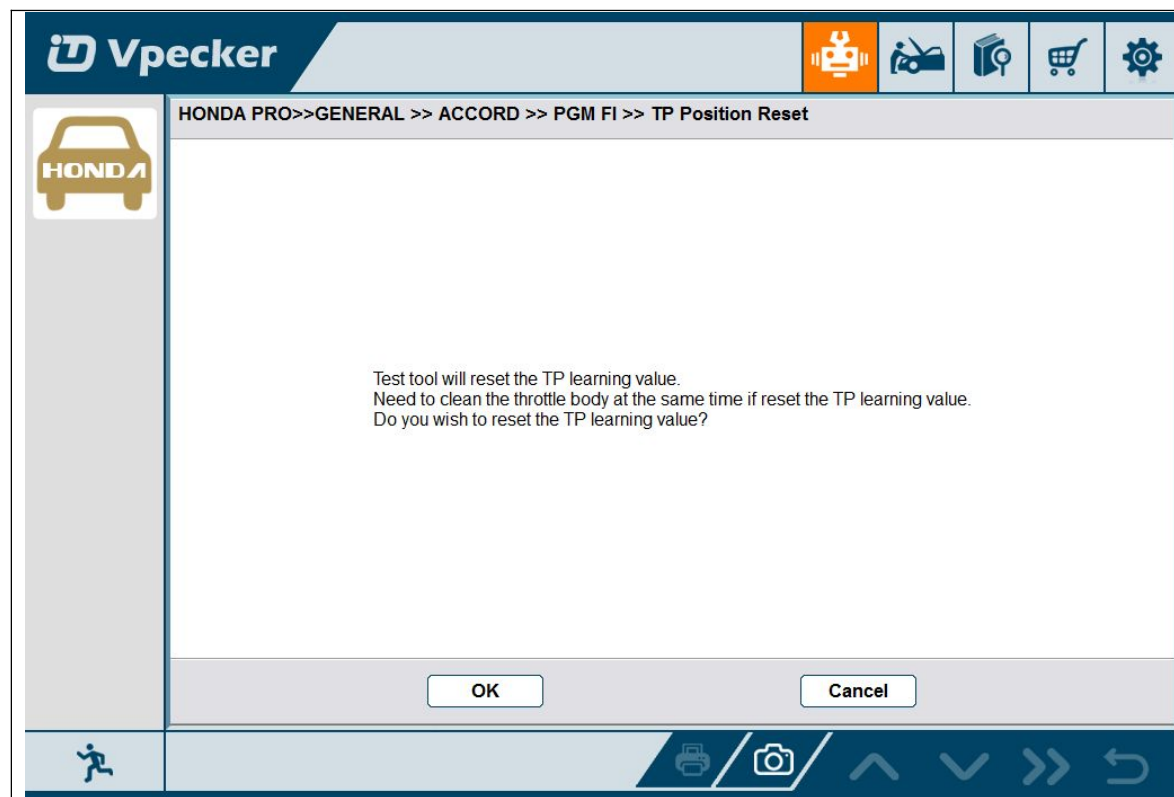
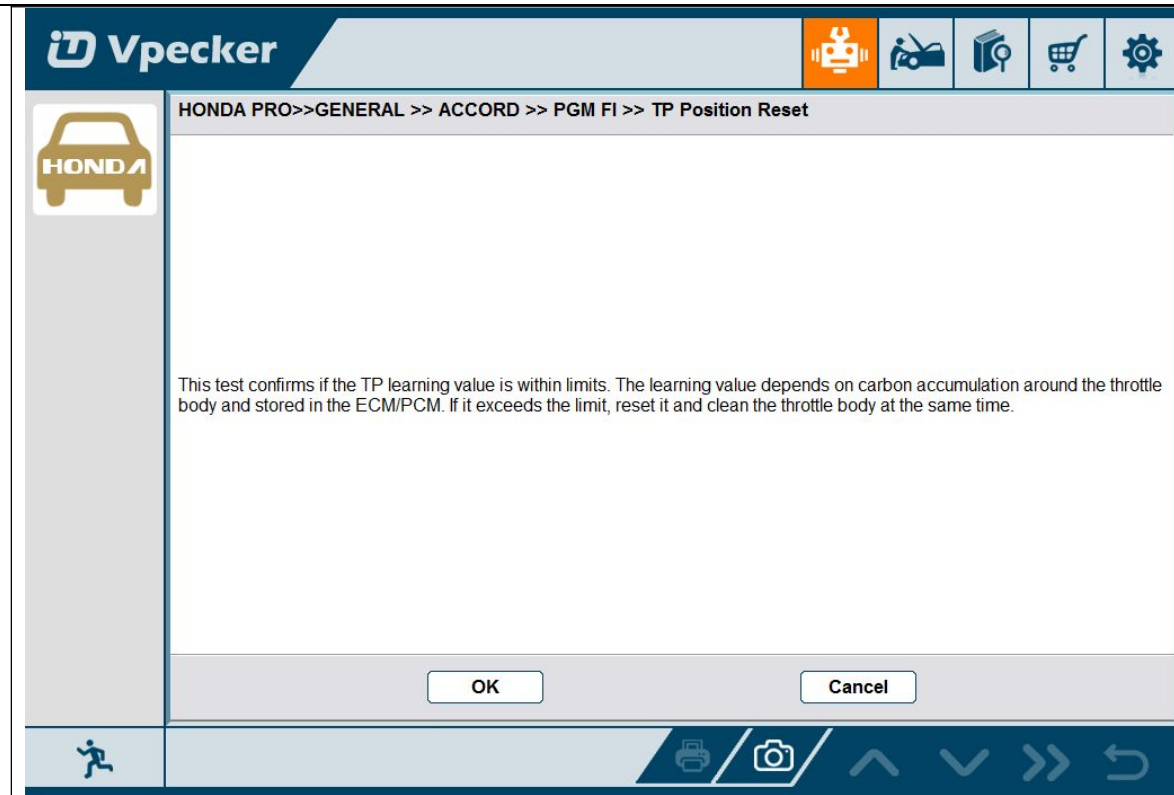
**4.7.6 Inspection**

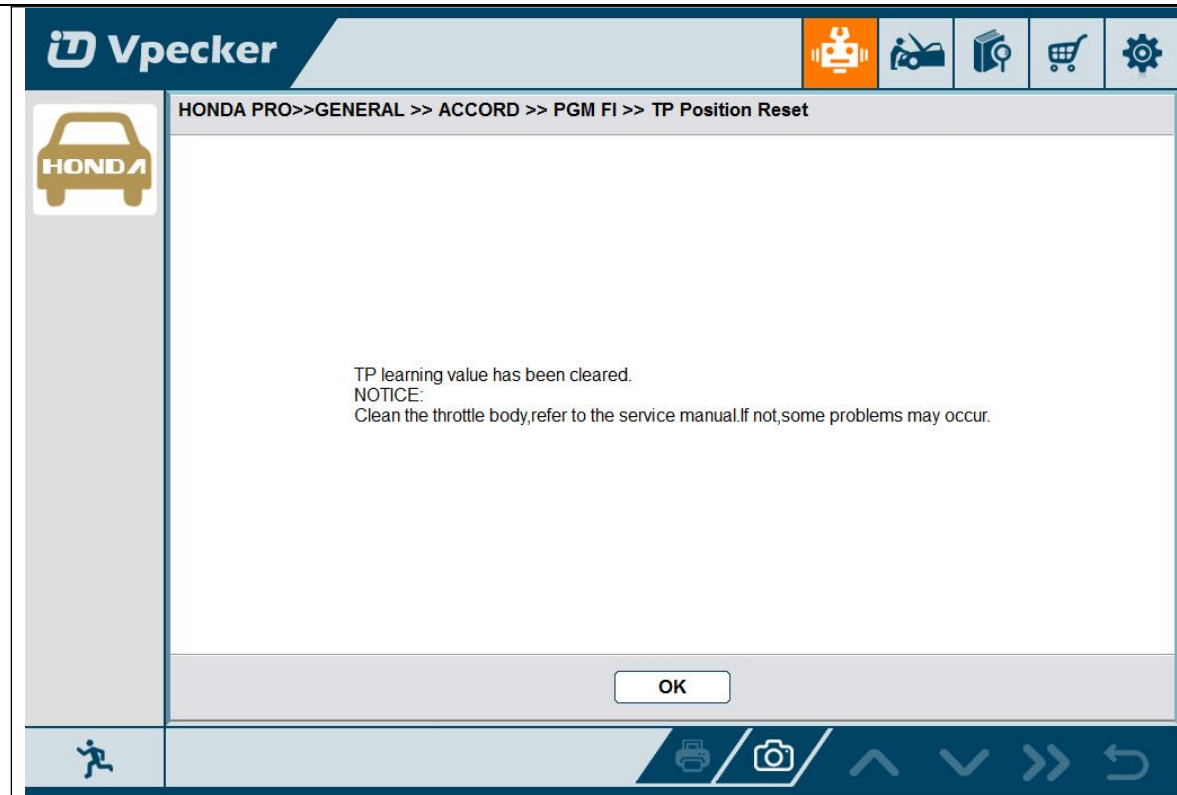




4.7.7 TP Position Reset

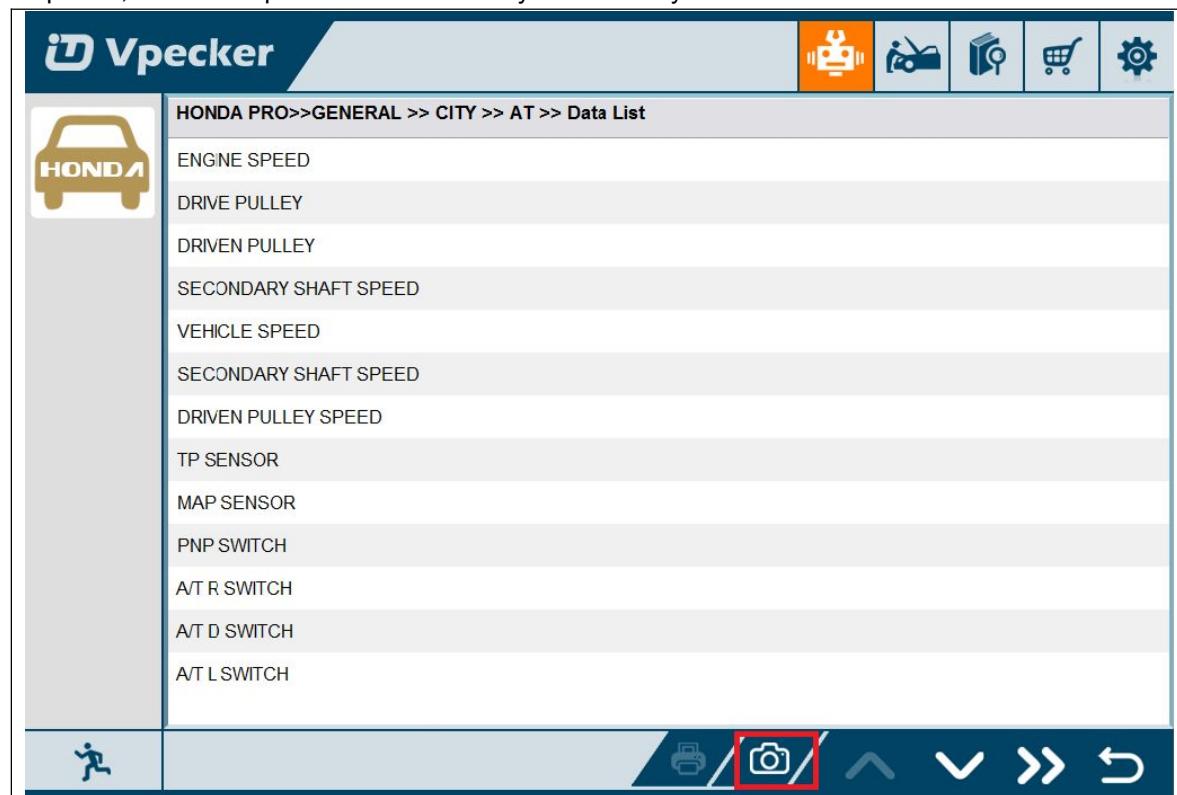




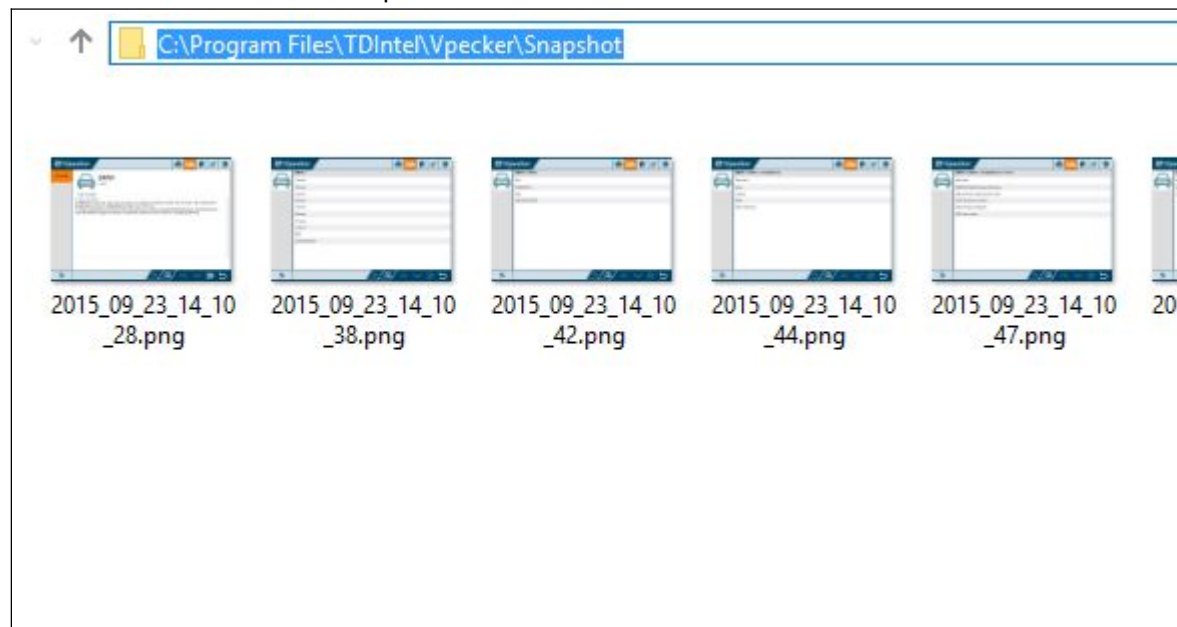


**4.8 Screenshot**

Captures, saves and prints screenshots anytime and anywhere.

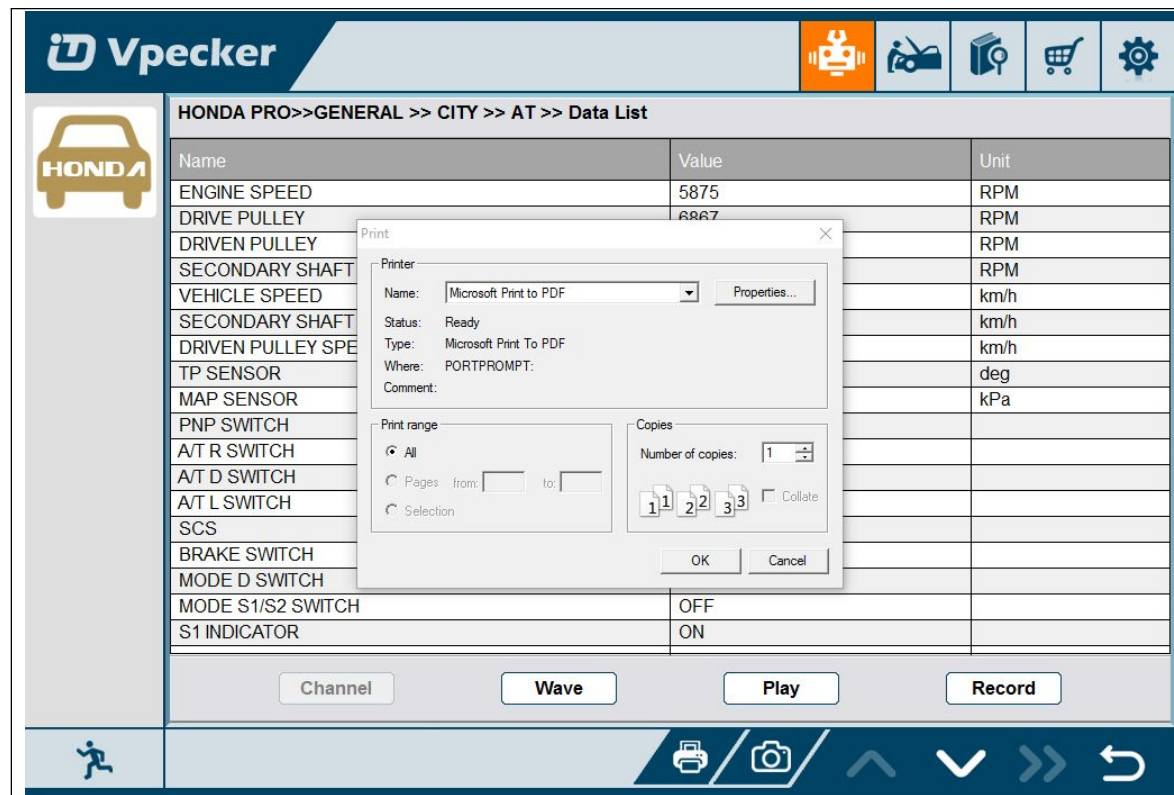
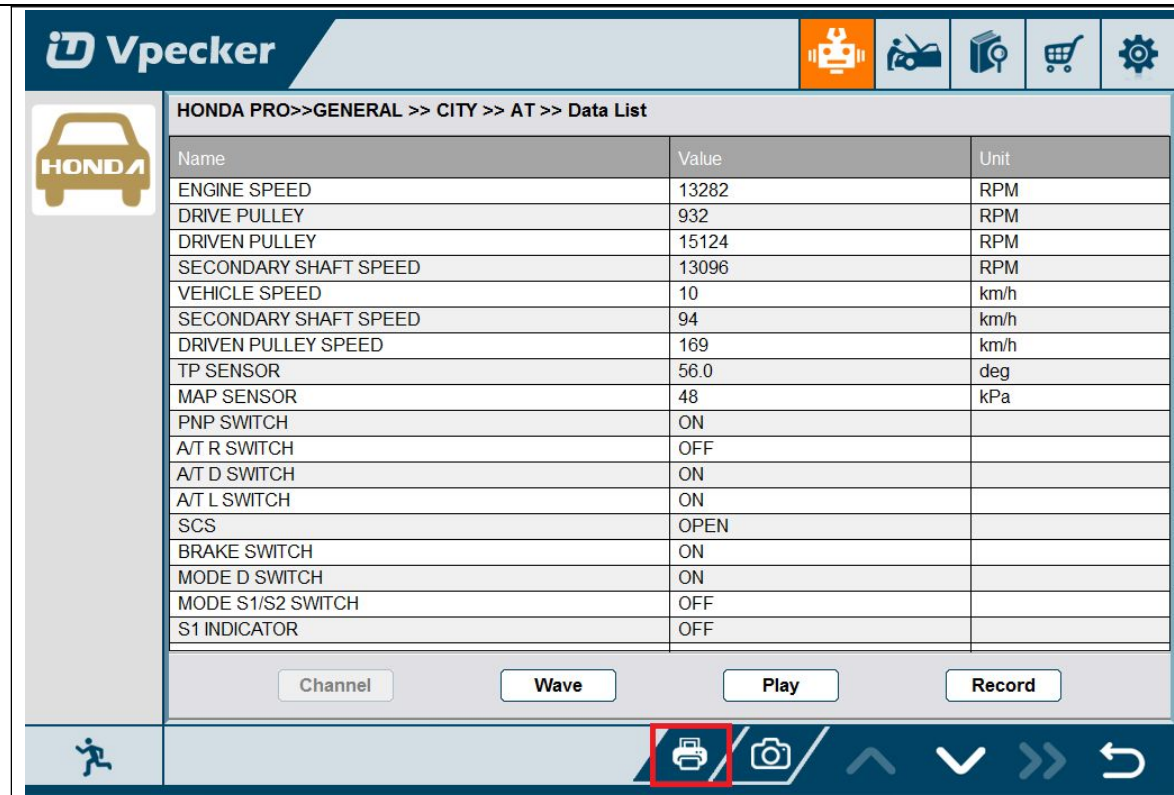


The screenshot files save at the path:



**4.9 Print**

Prints out recorded data with Wi-Fi printing capability.



Press "OK" to print the test report, as below:

★ Company name:  
 📍 Address:  
 ☎ Tel:  
 📠 Fax:  
 ✉ Email:

---

Date: 2015-09-23 11:44:19  
 Vehicle: HONDA PRO

---

Path: HONDA PRO / GENERAL / CITY / AT / Data List

**Live Data**

Name	Value	Unit
ENGINE SPEED	10628	RPM
DRIVE PULLEY	8456	RPM
DRIVEN PULLEY	11111	RPM
SECONDARY SHAFT SPEED	7639	RPM
VEHICLE SPEED	125	km/h
SECONDARY SHAFT SPEED	172	km/h
DRIVEN PULLEY SPEED	207	km/h
TP SENSOR	44.3	deg
MAP SENSOR	157	kPa
PNP SWITCH	ON	
A/T R SWITCH	OFF	
A/T D SWITCH	OFF	
A/T L SWITCH	ON	
SCS	SHORT	
BRAKE SWITCH	ON	
MODE D SWITCH	ON	
MODE S1/S2 SWITCH	ON	
S1 INDICATOR	ON	
S2 INDICATOR	OFF	
D INDICATOR	OFF	
INHIBITOR SOL	ON	
COOLING CONTROL	OFF	
FEEDBACK LEARN	Completed	
SHIFT CONTROL SOL	99.24	A
PULLEY CONTROL SOL	81.61	A
START CLUTCH CONTROL SOL	8.49	A

- 1 -

## 5. Products website

Please focus on our website [www.tdintel.com](http://www.tdintel.com) for the updating information and other news.

## 6. Warranty

VPECKER software is free updating within 1 year, from the date of online automatically updating.