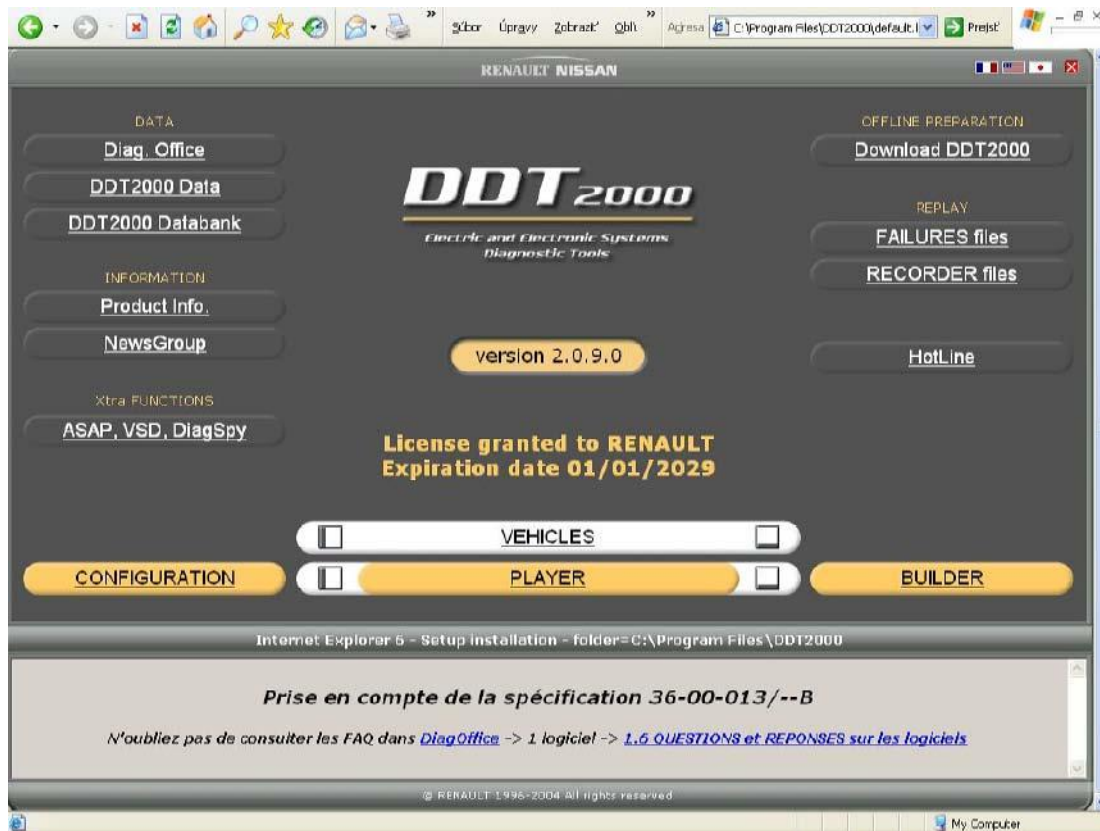
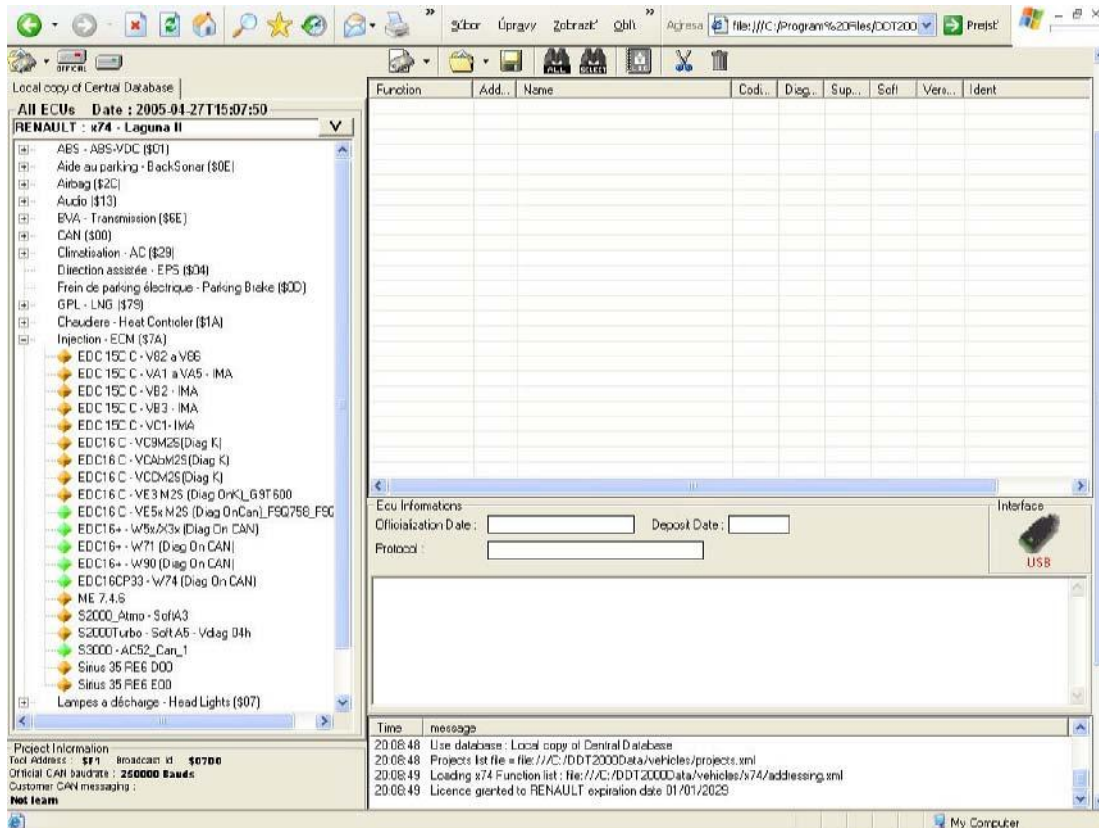


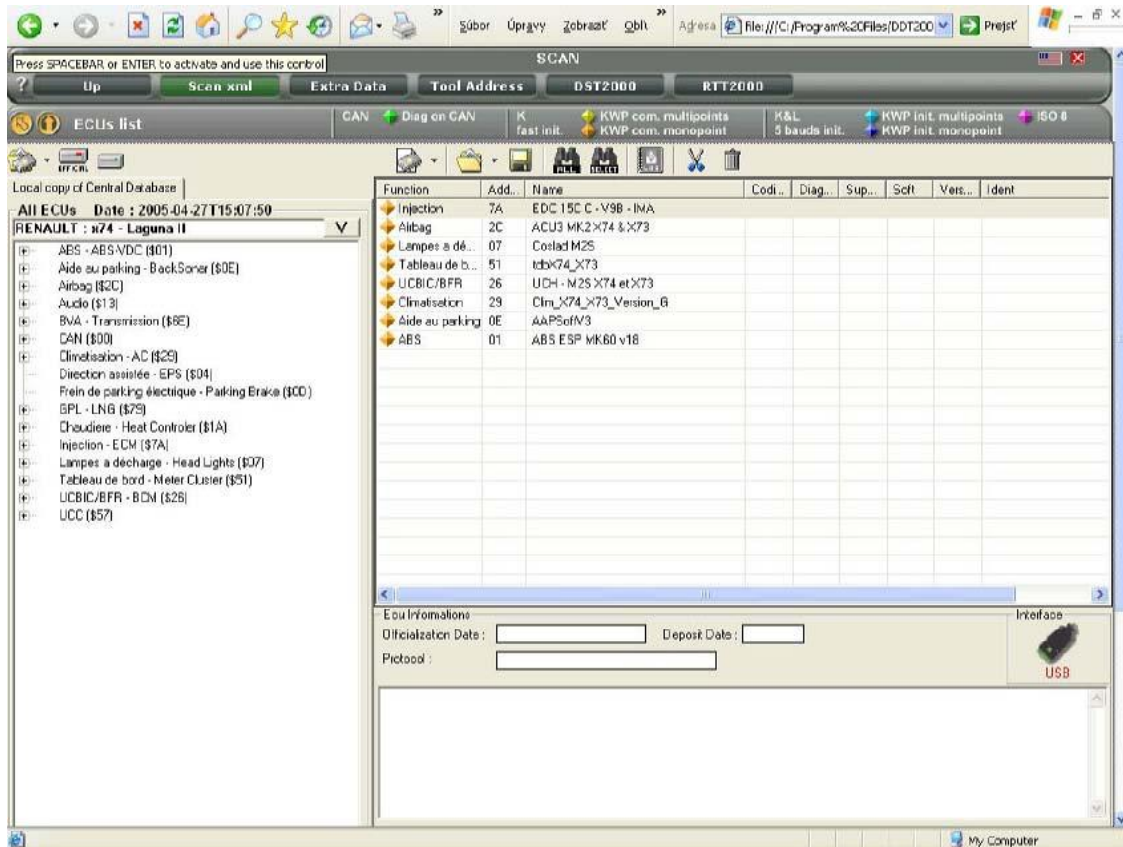
DDT2000



CONFIGURATION help you to configurate the port and interface. Choose VEHICLES to choose the car do you want to diagnos:



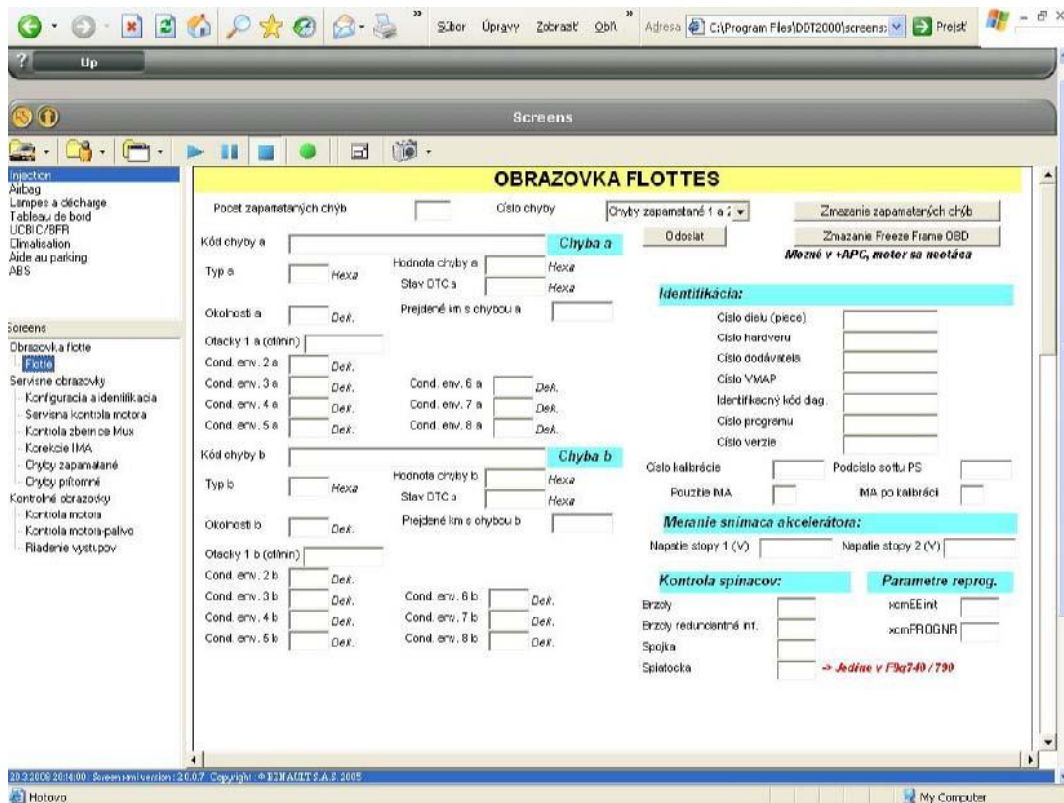
In the left side up is the car you have chosen (you can change it here as well). Under is a list of control units that can be found in the car. In This picture expanded injection - one of these controllers, your car uses. Note the colored squares in the types of RJ. If you car marked in green RJ (Diag on CAN) unnecessarily you try to communicate with it via K-line. If you are connected to the car via a program interface configured to communicate and the correct port (see interface icon on the right) you can run the auto-detect (the bar over the right to block, "telescope" ALL).if it works should appear in the right window the RJ found in the vehicle.



Another option is to manually select the RJ list on the left. Click the "+" to break the group, and double click, to choose the RJ of your car - they will appear in the right window. You can use this option if you want to try working with in advance, without connection to the car or if you want to work with only one RJ and know which one. Another choice is to browse for RJ file. You'll use it later (maybe) when you file for "their" RJ edit and save it somewhere in the directory. Now when you have been set the RJ which you'll work with, choose "UP" (upper left in the program)

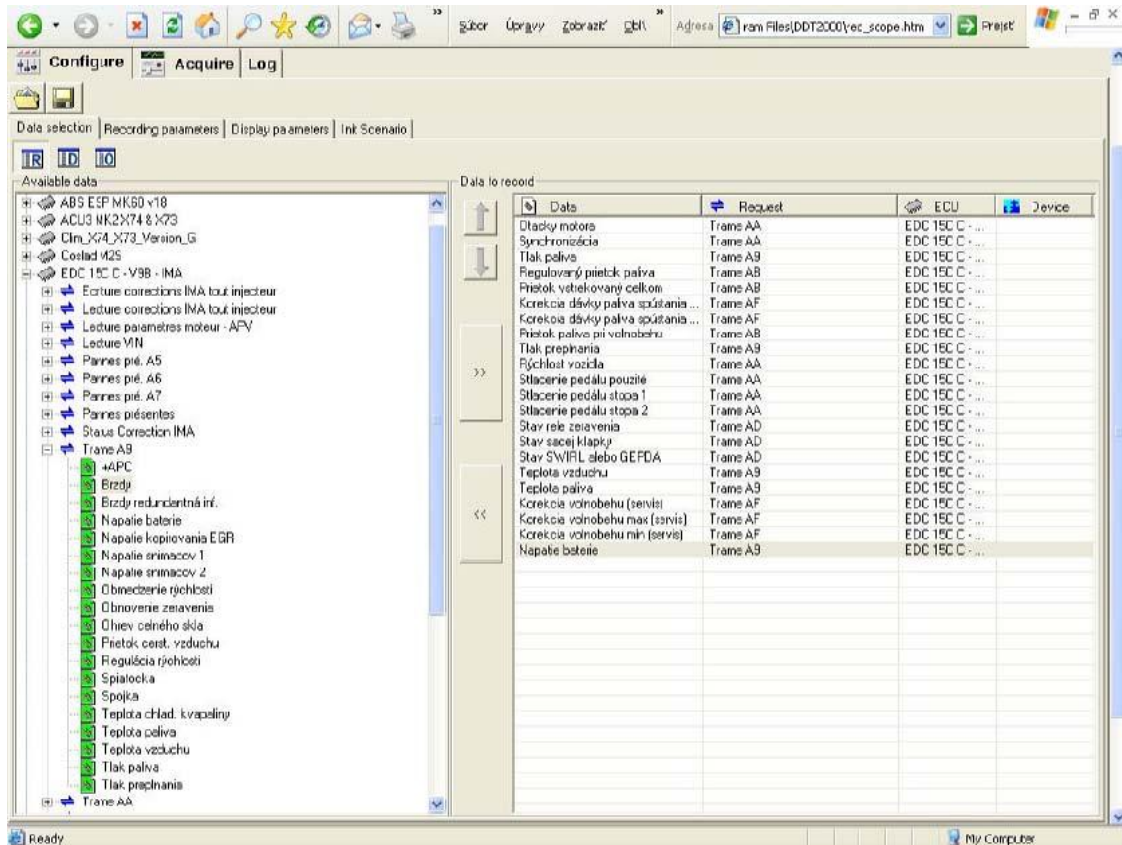


Here you can choose to work with "FAILURES" - this is only suitable for rapid detection, if the RJ (only those which you chose in the previous screen) are remembered but not errors. There is little information on errors to diagnose the fault. Work with errors rather through "SCREENS" there is much more error information.

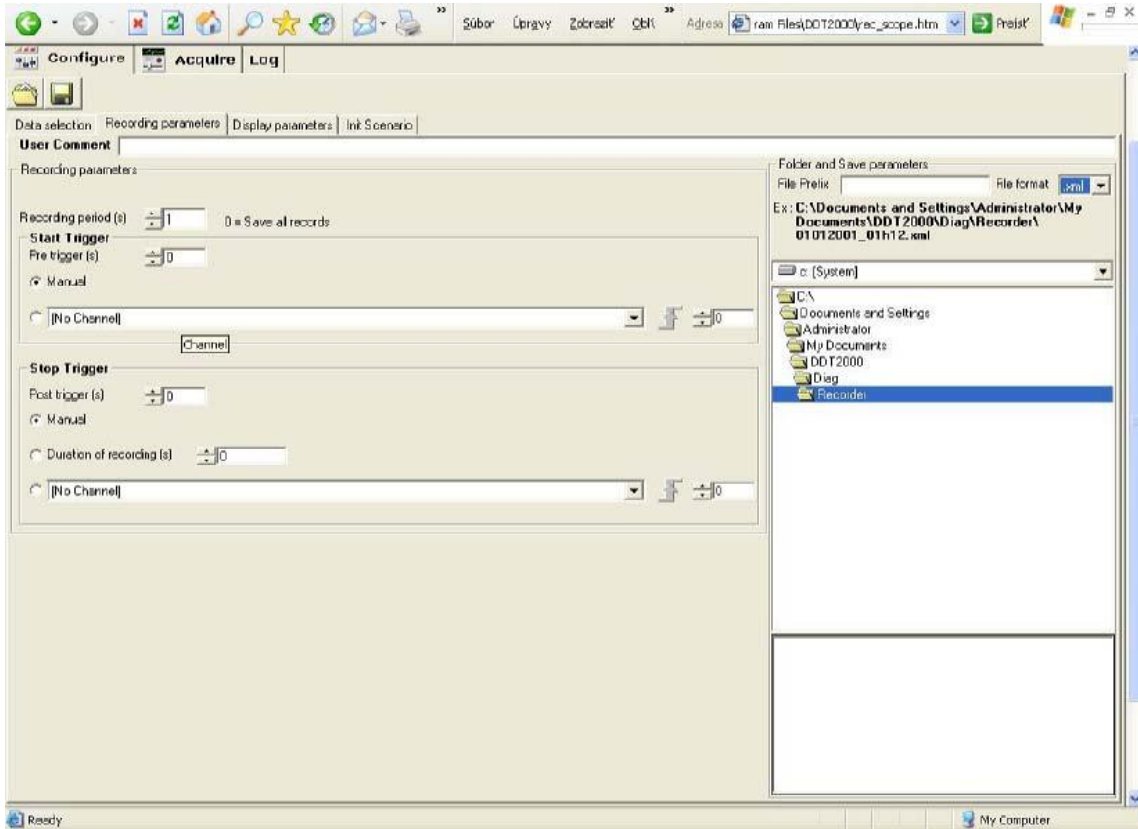


This is how it looks in the "Screens". If you are connected to the car you should have seen the data from the RJ. Top left chooses with one you work with and RJ down what you do with it. This is useless to write something, you just read and know what to do. It used service manual for the diagnosis of Dialogysu, errors and procedures are the same. The error codes are CLIP others should be oriented along the names of errors. In the upper bar are two important buttons (be pushed), the green dot is communication, and the arrow (like "play").

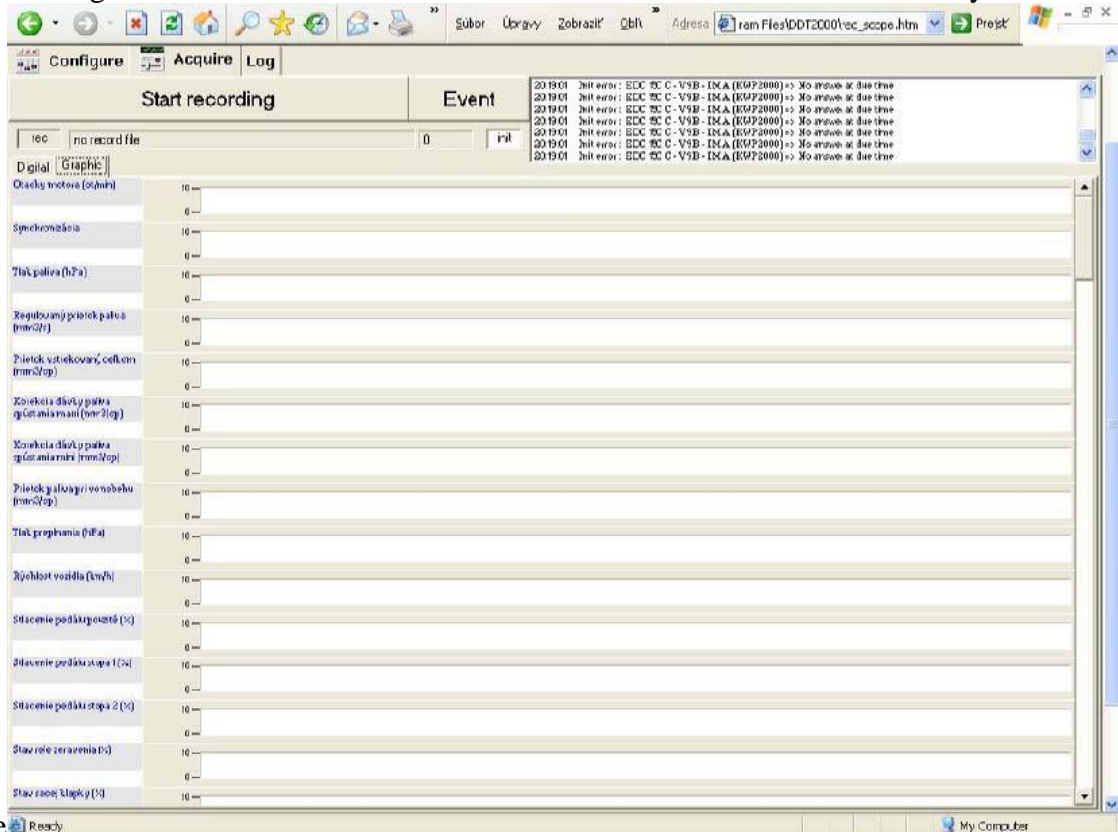
To write data from a RJ is used RECORDER (the player menu). That you use when you check eg. conditions under which a fault occurs. First you need to choose a car and necessary RJ.



Sort the values now, chart later is almost impossible. If you like charts, get an entry in the XML (right), otherwise



You start writing "START RECORDING" and such. move the car a few miles until you do not



see failure

After completing registration you will automatically save the log to disk, you can study it now or later, a hole through it "RECORDER FILES". Once opened, it looks like

